



Butler County  
**UNITED WAY**

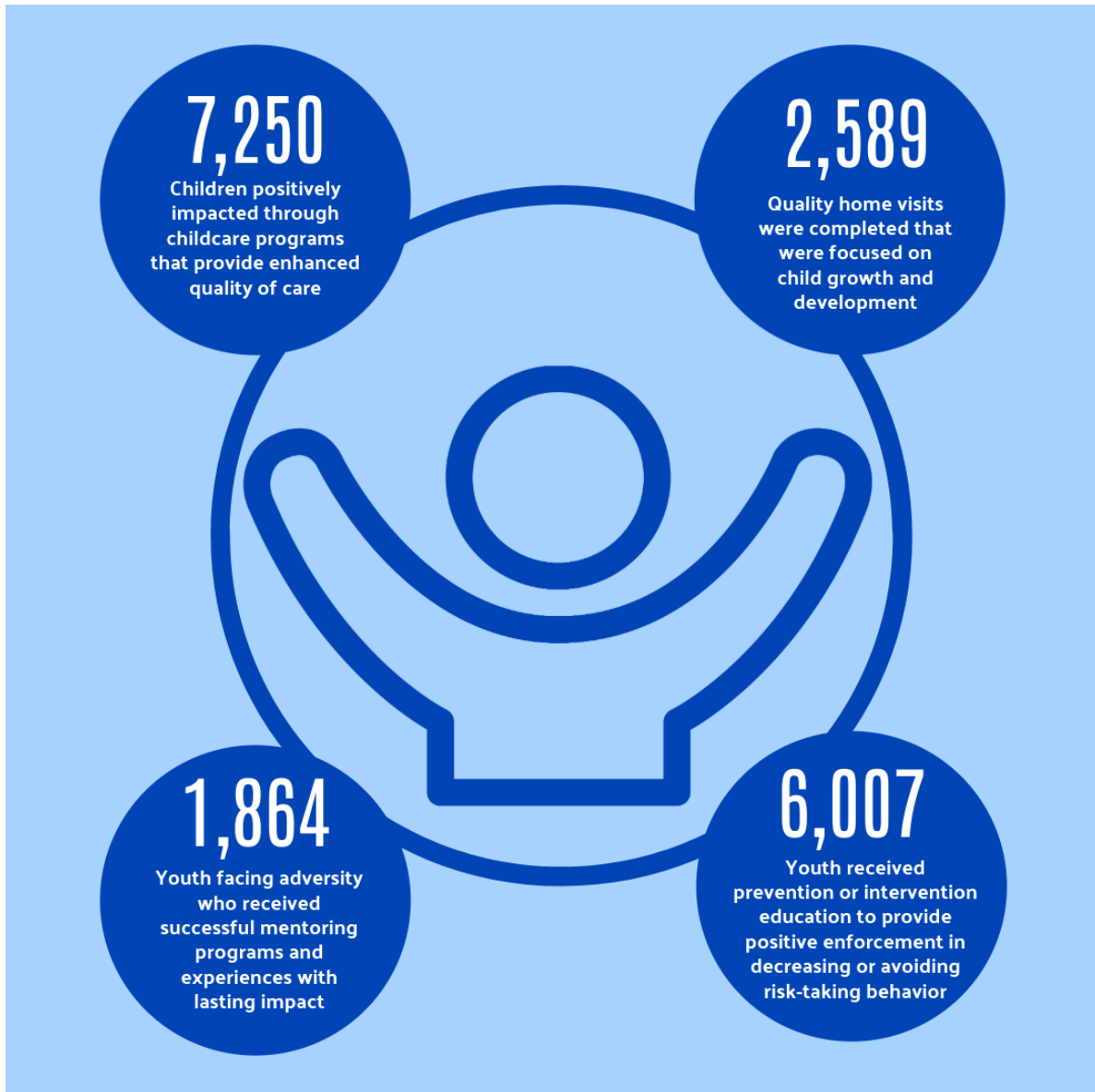
**UNITED  
IS THE  
WAY**

**2025 - 2026**



# YOUTH OPPORTUNITY

Our impact across Butler County communities...



“ I am filled with gratitude for the opportunities provided to me. It has not only shaped me into a better leader and a better person but has also instilled in me a lifelong love of learning, adventure, and service. ”

-Chris B.  
Butler County Scouting

# CURRENTLY FUNDED YOUTH OPPORTUNITY AGENCIES/PROGRAMS

**4C for Children**

**Preserving Quality Child Care**

**Abilities First**

**Abilities First Children's Services**

**Big Brothers Big Sisters of Butler County**

**One-to-One Mentoring**

**Scouting America, Dan Beard Council**

**Butler County Scouting**

**Boys & Girls Club of Hamilton**

**Project Learn: High Yield Activities for Academic Success**

**Community Building Institute Middletown, Inc.**

**Cradle to Career Continuum**

**Feed the Hungry Project**

**Dream Center Youth Enrichment Program**

**Girl Scouts of Western Ohio**

**Direct Delivery and Spring Break Day Camp**

**Hamilton Living Water Ministry, Inc.**

**Children and Youth After School and Summer Development Program**

**PARACHUTE: Butler County CASA**

**CASA Advocacy: A Voice for Abused Children**

## COLLABORATIONS

**Booker T. Washington Community Center (BTW) Thrive Youth Programming**  
**Great Miami Valley YMCA\*, Fitton Center for Creative Arts, Miami University, and others**

**Early Childhood Mental Health Prevention Project**  
**Catholic Charities of Southwestern Ohio\***

**Every Child Succeeds Home Visitation**  
**Butler County Educational Service Center\* coordinated through Cincinnati Children's Hospital Medical Center**

**\*indicates lead agency**

Our impact across Butler County communities...



“ I often go without so my kids don’t have to. I was able to come and get an extra box of food through the Compassion Project for Christmas, which helped us. It gave us enough so I could buy the kids each something for under the tree. I have been working with my liaison to budget and find ways to save more money. I picked up a part time extra job delivering pizza to so I can provide for myself and my family in the future. ”

- Martha  
The Compassion Project



# CURRENTLY FUNDED FINANCIAL SECURITY AGENCIES/PROGRAMS

American Red Cross Greater Cincinnati Tri-State Chapter  
Disaster Emergency Services and Preparedness Programs

Family Promise of Butler County, Inc.  
Maintaining Housing Stability

Lifespan, Inc.  
Representative Payee Program

SELF (Supports to Encourage Low-income Families)  
Neighbors Who Care: Home Repair

Serve City  
Move Forward Housing Stability Program

The Salvation Army Middletown Corps  
Crisis Intervention

TOPSS (Talawanda Oxford Pantry and Social Services)  
Emergency Assistance Program

## COLLABORATIONS

Emergency Shelter to Eliminate Homelessness  
Hope House Rescue Mission Inc.\*, Modern Psychiatry and Wellness, LLC., and JobsPlus

Money Management: Neighborhood Site  
SELF (Supports to Encourage Low-income Families)\* and Serve City

\*indicates lead agency



Butler County  
**UNITED WAY**

# HEALTHY COMMUNITY

Our impact across Butler County communities...



“As my journey is filled with so many twists and turns, I am comforted in knowing there is one constant. They will be there to support me along the way. I don't have to go it alone. That means so much to me and my family.”

-Cheryl B.  
Cancer Family Care

# CURRENTLY FUNDED HEALTH AGENCIES/PROGRAMS

**Butler County Educational Service Center**  
**Compassion Project**

**Butler County Special Olympics**  
**Butler County Special Olympics**

**Cancer Family Care**  
**Center for Individual and Family Counseling**

**Catholic Charities of Southwestern Ohio**  
**Mental Health Counseling**

**Cincinnati Association for the Blind and Visually Impaired (CABVI)**  
**Vision Rehabilitation Services**

**Easterseals**  
**Adult Day Services**

**Envision Partnerships**  
**Project Success**

**Fairfield Prevention Coalition**  
**Youth Wellbeing and Resilience**

**Oxford College Corner Clinic**  
**Free Clinic Medication and Testing Program**

**Oxford Senior Citizens, Inc.**  
**Senior and Medical Transportation**

**Sojourner Recovery Services**  
**Perinatal Services**

**The Coalition for a Healthy Community Oxford**  
**Building a Healthier Community**

**Women Helping Women**  
**Butler County Rape Crisis and Prevention Services**

**YWCA of Hamilton**  
**Dove House Domestic Violence Shelter**

## COLLABORATIONS

**Comprehensive Hunger Relief Program**  
**Shared Harvest Foodbank\* and other Butler County area food pantries**

**Congregate Meals**  
**Warren County Community Services, Inc.\* and Meals on Wheels Senior Dining Centers**

**The Connect Project**  
**Focus on Youth, Inc.,\* EDGE Axis Teen Centers, and Boys and Girls Club of West Chester/Liberty**

\*indicates lead agency



Butler County  
**UNITED WAY**

# 2025-26 COMMUNITY PARTNERS AND FUNDED PROGRAMS

## YOUTH OPPORTUNITY PROGRAMMING

**4C for Children:** Preserving Quality Child Care

**Abilities First:** Abilities First Children's Services

**Big Brothers Big Sisters of Butler County:** One-to-One Mentoring

**Scouting America, Dan Beard Council:** Butler County Scouting

**Boys & Girls Club of Hamilton:** Project Learn: High Yield Activities for Academic Success

**Community Building Institute Middletown, Inc.:** Cradle to Career Continuum

**Feed the Hungry Project:** Dream Center Youth Enrichment Program

**Girl Scouts of Western Ohio:** Direct Delivery and Spring Break Day Camp

**Hamilton Living Water Ministry, Inc.:** Youth After School & Summer Development

**PARACHUTE: Butler County CASA:** CASA Advocacy A Voice for Abused Children

## FINANCIAL SECURITY PROGRAMMING

**American Red Cross Greater Cincinnati Tri-State Chapter:** Disaster Emergency Services and Preparedness Programs

**Family Promise of Butler County, Inc.:** Maintaining Housing Stability

**Lifespan, Inc.:** Representative Payee Program

**SELF (Supports to Encourage Low-income Families):** Neighbors Who Care: Home Repair

**Serve City:** Move Forward Housing Stability Program

**The Salvation Army Middletown Corps:** Crisis Intervention

**TOPSS (Talawanda Oxford Pantry and Social Services):** Emergency Assistance Program

## HEALTHY COMMUNITY PROGRAMMING

**Butler County Educational Service Center:** The Compassion Project

**Butler County Special Olympics:** Butler County Special Olympics

**Cancer Family Care:** Center for Individual and Family Counseling

**Catholic Charities of Southwestern Ohio:** Mental Health Counseling

**Cincinnati Association for the Blind and Visually Impaired(CABVI):** Vision Rehabilitation Services

**Easterseals:** Adult Day Services

**Envision Partnerships:** Project Success

**Fairfield Prevention Coalition:** Youth Wellbeing and Resilience

**Oxford College Corner Free Clinic:** Free Clinic Medication and Testing

**Oxford Senior Citizens, Inc.:** Senior and Medical Transportation

**Sojourner Recovery Services:** Perinatal Services

**The Coalition for a Healthy Community Oxford:** Building a Healthier Community

**Women Helping Women:** Butler County Rape Crisis and Prevention Services

**YWCA of Hamilton:** Dove House Domestic Violence Shelter

# COLLABORATIONS

## **Booker T. Washington Community Center (BTW) Thrive Youth Programming**

Great Miami Valley YMCA\*, Fitton Center for Creative Arts, Miami University, and others

## **Congregate Meals**

Warren County Community Services, Inc.\* and Meals on Wheels Senior Dining Centers

## **Comprehensive Hunger Relief Program**

Shared Harvest Foodbank\* and Butler County area food pantries

## **Early Childhood Mental Health Prevention Project**

Catholic Charities of Southwestern Ohio\*

## **Emergency Shelter to Eliminate Homelessness**

Hope House Rescue Mission, Inc.\*, Modern Psychiatry and Wellness, LLC., and JobsPlus

## **Every Child Succeeds Home Visitation**

Butler County Educational Service Center\*, coordinated through Cincinnati Children's Hospital Medical Center

## **The Connect Project**

Focus on Youth, Inc.\* Axis Teen Centers, and Boys and Girls Club of West Chester/Liberty

## **Money Management: Neighborhood Site**

SELF (Supports to Encourage Low-Income Families)\* and Serve City

\*indicates lead agency

## ADDITIONAL NON-FUNDED COMMUNITY PARTNERS

**Axis EDGE Teen Center**

**Boys & Girls Club of West Chester/Liberty**

**Community First Solutions**

**Fitton Center for Creative Arts**

**Health Care Access Now**

**Hope's Closet**

**Legal Aid Society of Greater Cincinnati**

**NewPath Child and Family Solutions**

**Primary Health Solutions**

**PUSH (People United for Self-Help)**

The community partners listed above have completed the appropriate process to become a community partner agency of Butler County United Way.

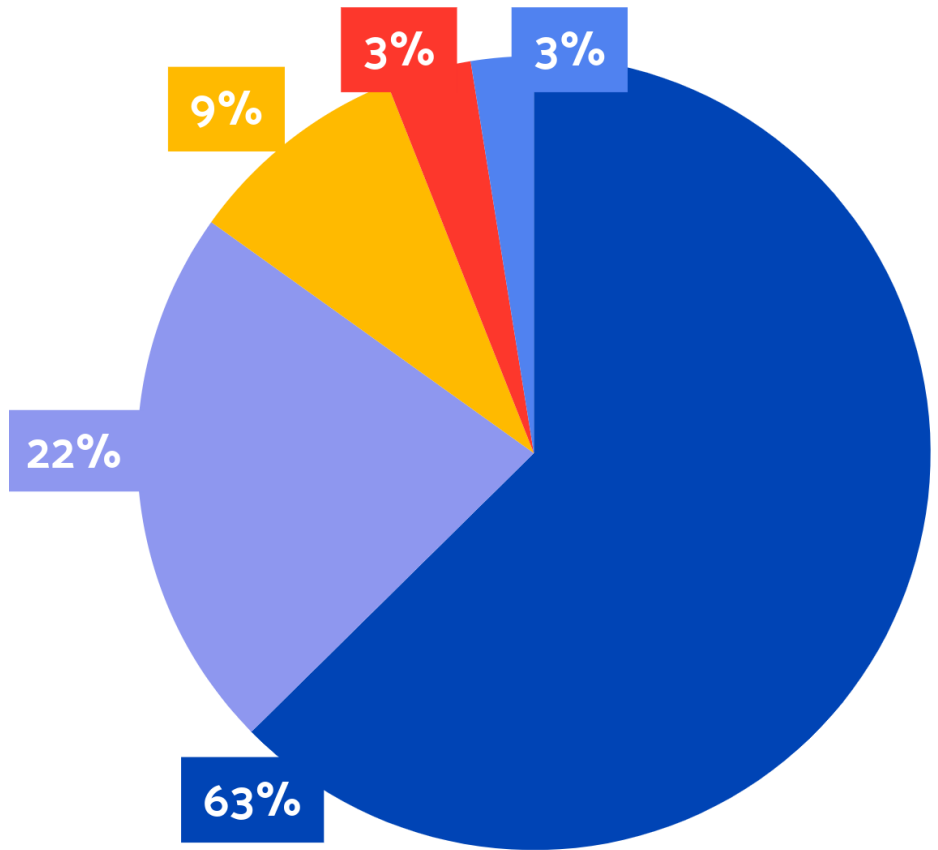
You are welcome to designate your contribution to any of these agencies.

# HOW MY DONATION WAS USED

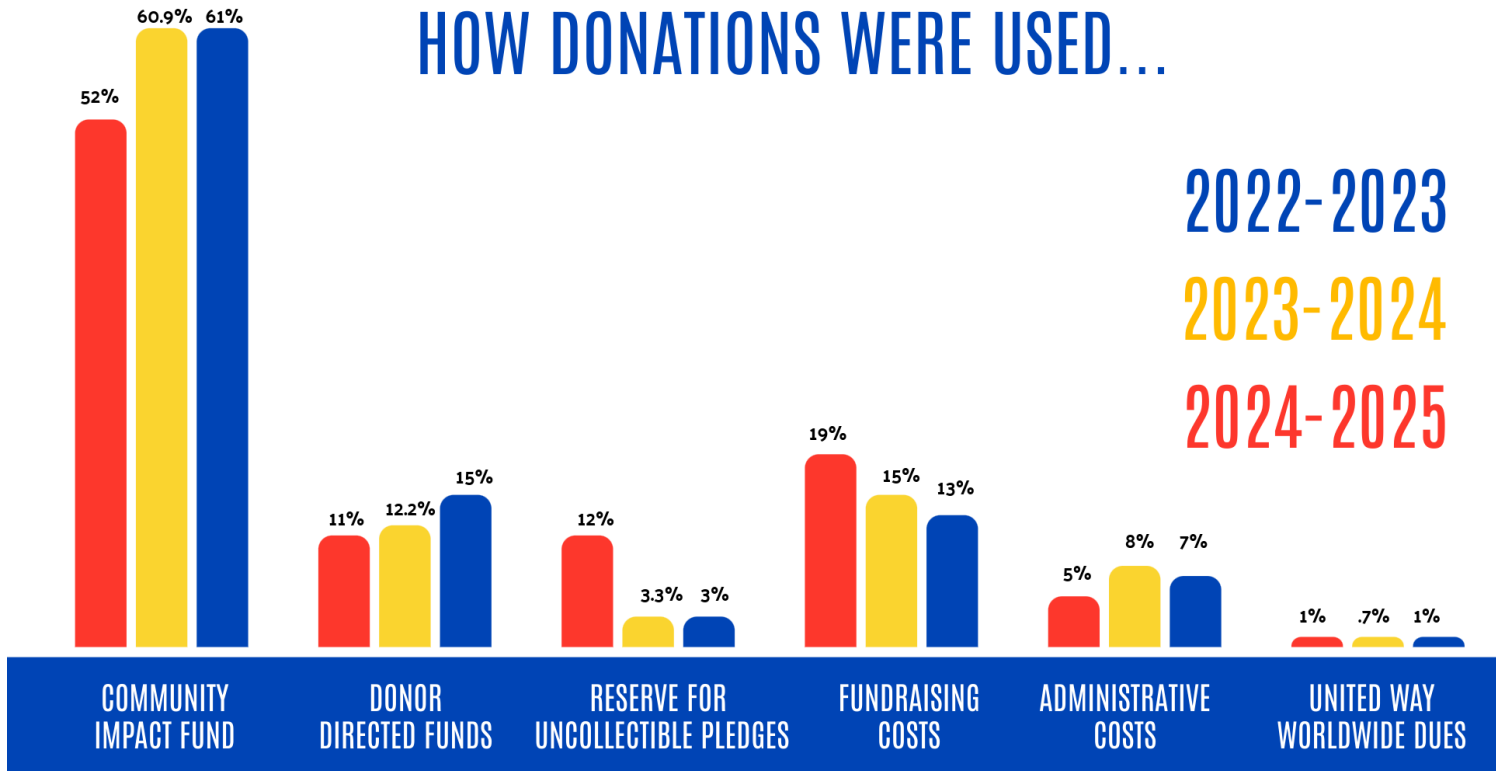
July 1, 2024- June 30, 2025

## WHERE DONATIONS ORIGINATED...

- WORKPLACE CAMPAIGN
- EMPLOYEE DONATIONS
- CORPORATE DONATIONS
- INDIVIDUAL DONATIONS
- SPONSORSHIPS AND OTHER CONTRIBUTIONS
- IN-KIND DONATIONS



## HOW DONATIONS WERE USED...



# EASY WAYS TO GIVE



## GIVE ONLINE

Donate now by visiting [www.bc-unitedway.org/give](http://www.bc-unitedway.org/give) or by scanning the QR code to your right.



## KROGER PLUS CARD

- If you are not a current Kroger Plus Cardholder, register online at [krogercommunityrewards.com](http://krogercommunityrewards.com)
- If you are a current Kroger Plus Cardholder, sign in to your digital account.
- Search for Butler County United Way or enter the code HI861.
- You may view your Community Rewards contribution at any time by clicking on Community Rewards on the My Account screen.
- Swipe your registered Kroger Plus card or use the phone number that is related to your registered Kroger Plus card when shopping for each purchase to count.

## GORDON FOOD SERVICE

When shopping at any Gordon Food Service (GFS) location, simply tell the cashier at the time of checkout, that you would like your purchases to be applied to Butler County United Way. The cashier will look us up and apply your purchase amount toward the rebate total we will receive on a periodic basis. It's just that easy!

## WALMART SPARK REGISTRY

Visit our registry page at:

<https://www.walmart.com/registry/RR/2edb27b9-4822-4417-8a53-766616422b55>



Get Connected. Get Help.™

No matter the situation, the specialists at 211 listen, identify underlying problems, and connect people in need with community resources and services that improve their lives.

211 is free, accessible 24/7/365, completely confidential and available in more than 180 languages.



Call **211** for immediate assistance or visit [www.bc-unitedway.org/211](http://www.bc-unitedway.org/211) for more information.



### BASIC NEEDS

Food, Clothing, Cleaning Supplies, Low-Income Help, Transportation, Community Meals, Fresh Food, Housing, Child Care, Baby Supplies (Food, Diapers, etc.)



### HOUSING ASSISTANCE

Tenant Rights, Public Housing, Rent Assistance, Mortgage Help, Homelessness, Relocation, Section 8, Care Shelters (Abuse, Youth, Elderly, Homeless, Women, Families), Senior Housing, Housing Complaints, Emergency Assistance



### MENTAL HEALTH SERVICES

Support Groups, Therapy Referrals, Care Providers, Family Counseling, Counseling Providers, Adult and Child Behavioral Health Programs and Support, Bereavement and Grief Support, Identifying Mental Health Support Providers, Psychiatric Support Services, Specialized Support Hotlines.



### UTILITY BILLS

Electric/Power, Gas, Heat, Sewer, Water, Telecommunications (including internet access) and more.



### EMPLOYMENT SERVICES

Job Training, Career Fairs, Continuing Education, Employment Agencies, General Employment Resources and Career Counseling Services.