

ADVANCING EDUCATION
INCOME AND HEALTH

LIVE UNITED

ADVANCING THE COMMON GOOD 2013 ANNUAL REPORT

GIVE. ADVOCATE. VOLUNTEER.

Butler County United Way
bc-unitedway.org





TABLE OF CONTENTS

Vision and Mission	3
Education	8
Income	10
Health	12
Day of Caring	14
Campaigns & Awards	16
Cabinet Council	18
Giving	20
Sponsorships	22
Board	23
Financials	24

BUTLER COUNTY UNITED WAY VISION

Strengthening Communities One Person at a time.

BUTLER COUNTY UNITED WAY MISSION

Connecting Resources to Important Community needs.

UNITED WAY WORLDWIDE VISION

United Way envisions a world where all individuals and families achieve their human potential through education, financial stability and healthy lives.

Imagine a world that fosters hope and opportunity for everyone. A world where...

- All children receive a **quality education** that offers a pathway to a brighter tomorrow.
- The cycle of poverty and financial dependence ends, and **productive livelihoods** begin for even the most disadvantaged.
- Everyone receives **effective health care** that improves quality of life.
- Communities not only set significant and measurable goals to **advance these fundamental elements of human development**, but achieve them.

UNITED WAY WORLDWIDE MISSION

To improve lives by mobilizing the caring power of communities around the world to advance the common good.

To do this we will...

- Ignite a **worldwide social movement**, and thereby mobilize millions to action – to give, advocate and volunteer to improve the conditions in which they live.
- Galvanize and connect all sectors of society – individuals, businesses, nonprofit organizations and governments – to create **long-term social change** that produces healthy, well-educated and financially-stable individuals and families.
- Raise, invest and leverage billions of **funds annually in philanthropic contributions** to create and support innovative programs and approaches to generate sustained impact in local communities.
- Hold ourselves accountable to this cause through our steadfast commitment to continually measure – in real terms – **improvement in education, income and health**.

EDUCATION. INCOME. HEALTH.



STRENGTHENING FOUNDATIONS



AS WE LOOK BACK ON THE YEAR JUST PAST, WE ARE PROUD OF THE PROGRESS WE HAVE MADE IN STRENGTHENING OUR FOUNDATION AND THE AS-YET SMALL STEPS WE HAVE TAKEN IN BROADENING OUR BASE THROUGHOUT OUR SERVICE AREA.

Historically, Hamilton has been the center of commerce and culture for our area since at least the mid-1800's, and since the inception of the Butler County United Way in 1920, Hamilton has been the center of both charitable giving and need in our community.

Sometime around the 1950's, Fairfield began its growth spurt, partly because of the Fisher Body Plant, and also as a growing bedroom community for Greater Cincinnati. Though it lacked a central downtown, at least until the Village Green was developed, Fairfield's Rt. 4 thrived as a retail destination – and the Butler County highway on which to find any make of automobile imaginable. In recent years, Fairfield has matured as a well-run city and an inviting place for young families to settle and sink roots.

West Chester and Liberty Townships have spurred the latest growth in the region, thanks in large part to the construction and development of the Union Center interchange on I-75 and the construction of Rt. 129 which now connects Hamilton to the Interstate System. Already a vital transportation hub along the I-75 Corridor, the two townships are also experiencing dizzying growth in population, as well as medical services and retail development.

Each of these three communities – and the more rural townships that keep the region tied to its farming heritage - is critical to the on-going growth and success of the Butler County United Way. Unfortunately, we have not always, as a United Way, maintained the close relationships with them that such growth will require. This past year saw us take critical steps – with new and existing business

partners – to broaden our footprint throughout the region, respecting the differences in each of our communities, and celebrating the common interests we all share in improving the common good through the services we support for children and families. We are well-positioned to build on that solid, broad foundation in the coming years.

We have also worked hard over the past few years to strengthen our relationships with the programs we fund, and the agencies that provide critical services throughout our communities – the services that can really make a difference in the lives of those we serve.

We are thankful beyond words to the many volunteers that make the work of the Butler County United Way possible – and important. With your help, and the resources of our partner agencies and business partners throughout the region, I am confident we will continue to grow and become even more vital, as we approach the centennial of our founding, now just seven years away. As I have said many times before, I am proud to have been associated with the organization and the community for these past fifteen years. Thank you all for your continuing support of our work.

Bruce Jewett
President/CEO
2011-2013



Dear Supporters:

As the year ended the transition continued to be the theme for Butler County United Way.

Bruce Jewett retired on May 31st, 2013, and we thank Bruce for his many years of contributions to Butler County United Way. With Bruce's retirement we began the search for a new President/CEO. Shelly Wallpe did a tremendous job leading the search effort which began in June. Over the summer the search team poured over one hundred applications and resumes. They conducted phone interviews and personal interviews and finally narrowed the search to offer Mag Baker the position of President/CEO.

Mag started her new job on October 21st, 2013, and hit the ground running. Mag will continue to develop our new strategic plan and lead growth of Butler County United Way.

Karen Mueller
Chair, Board of Trustees's
Horan Associates, Inc.

Margaret "Mag" Baker
President & CEO
Butler County United Way

BUTLER COUNTY UNITED WAY STAFF

Shari Hedrick, Director of Community Impact

Krystal Tipton, Administrator for Marketing & Development

Jan Troutman, Chief Financial Officer

Mitchell Willis, Director of Resource Development

"WHEN WE **LIVE UNITED** THERE'S
NOTHING WE CAN'T DO."

IMPACT



BOYS AND GIRLS CLUB OF HAMILTON WAS INSTRUMENTAL TO A YOUNG MOTHER'S GROWTH AND SUCCESS IN RAISING THREE CHILDREN ON HER OWN.

Toni Kristi Nicole King was born and raised in the Bamboo Harris Projects on Chestnut Street in Hamilton, Ohio. She was the second oldest of five children raised by a single mother who often took her and her siblings to work when there wasn't a babysitter. Toni spent most of her youth at the Larry Weekly Boys and Girls Club of Hamilton under the direction of Debra Pitcairn and at the Booker T. Washington Community Center under the direction of Darlene Slaughter and Lester Hudson. "I credit these programs and these people to my success along with my family, particularly my mother and my sisters (we are a very close family) for helping me stay out of trouble and off the streets" said Toni King.

Toni graduated in 1999 from Hamilton High School and went on to Howard University with a full academic scholarship. After transferring her junior year, she earned a Bachelors of Art in Chemistry and double minored in Math/ Physics in 2004 from Miami University Oxford.

In the fall of 2015, Toni will have earned her Masters of Midwifery from Frontier Nursing University and will be the only African-American Nurse Midwife in the Greater Cincinnati Area. In her spare time she volunteers for the Boys and Girls Club in Hamilton where her three children are involved.

EDUCATION. IN

NONPROFIT BOARD LEADERSHIP CERTIFICATE PROGRAM

THE NONPROFIT BOARD LEADERSHIP CERTIFICATE PROGRAM WAS DEVELOPED IN 2010 JOINTLY BY MIAMI UNIVERSITY'S CORPORATE & COMMUNITY INSTITUTE AND BUTLER COUNTY UNITED WAY TO PROVIDE INDIVIDUALS WITH EXPOSURE TO CONTENT EXPERTS AND THE COMPREHENSIVE KNOWLEDGE-BASE NEEDED TO BE AN OUTSTANDING BOARD MEMBER.

KEY OBJECTIVES INCLUDE:

- Enhancing transferrable business and/or life skills to ensure nonprofit board success
- Gaining a thorough understanding of the diverse aspects of nonprofit organizations
- Connecting professionals and companies to local community needs
- Linking graduates to one of several hundred Southwest Ohio area nonprofits as a skilled board member

With an average of 15 participants annually for the fall eight week course held at Miami University's Voice of America Learning Center, we've had 100% success with Board placement.

In 2011, the program received the Ohio Continuing Higher Education Association's Program Excellence Award.

THE FALL 2012 PROGRAM WAS GENEROUSLY SPONSORED BY:

CLARK SCHAEFER HACKETT
MILLER COORS
LCNB NATIONAL BNAK

GRAYDON HEAD
BARNES AEROSPACE

COME. HEALTH.

IMPROVING LIVES



IMAGINE A WORLD THAT FOSTERS HOPE AND OPPORTUNITY FOR EVERYONE.
A WORLD WHERE ALL CHILDREN RECEIVE A **QUALITY EDUCATION** THAT
OFFERS A PATHWAY TO A BRIGHTER TOMORROW.

Butler County United Way is working at critical points along the school spectrum to ensure the academic success of youth. Communities are engaging to support youth by volunteering and championing the cause of education. This mobilization of resources is creating hope and opportunity for youth who are better prepared to succeed.

EDUCATION

AGENCY

- Big Brothers Big Sisters
- Boys & Girls Club
- Girl Scouts of Western Ohio
- Great Miami Valley YMCA
- Hamilton Living Water
- LifeSpan, Inc.
- PARACHUTE
- Shared Harvest
- YWCA of Hamilton

2012-2013

PROGRAM

- One to One Mentoring
- After School and Summer Programming
- Personal Leadership Development
- After School and Summer Intervention
- Building Success
- School-Based Support
- Court Appointed Special Advocates (CASA)
- Backpack Program
- Girls' Inc.

“TOGETHER WE **CAN** GIVE KIDS AN
EQUAL CHANCE TO SUCCEED.”

MOBILIZING COMMUNITIES



IMAGINE A WORLD THAT FOSTERS HOPE AND OPPORTUNITY FOR EVERYONE. A WORLD WHERE THE CYCLE OF POVERTY AND FINANCIAL DEPENDENCE ENDS, AND PRODUCTIVE LIVELIHOODS BEGIN FOR EVEN THE MOST DISADVANTAGED.

United Way understands the local economy and is working with individuals, employers and government to create a stronger community. Through our efforts, individuals are seeing success and communities are being impacted by improved financial stability.

INCOME

Butler County 211

Hamilton Living Water

Legal Aid Society

LifeSpan, Inc.

Lighthouse Ministries

Mercy Franciscan at St. Raphael's

Partners in Prime

Pathways

Shared Harvest

SELF

YWCA of Hamilton

2012-2013

Information and Referral

Translation Services

Earned Income Tax Credit

Credit Counseling

Food Pantry

Emergency Financial Assistance

Transportation

Employment Services

Foodbanking

IDA

Getting Ahead/Circles

Group Workcamps

Dove House

Facilitated Tax Assistance

Family Literacy

Goodman Place

“TOGETHER AS **VOLUNTEERS**, WE
 CAN MAKE A DIFFERENCE”.

LONG-TERM SOCIAL CHANGE



IMAGINE A WORLD THAT FOSTERS HOPE AND OPPORTUNITY FOR EVERYONE. A WORLD WHERE EVERYONE'S NEEDS ARE MET AND QUALITY OF LIFE IMPROVES.

United Way understands the socio-economic factors that influence health outcomes. By having the community engage, mobilize and volunteer around health issues, we're working to improve health and support healthy lifestyles for youth and adults.

HEALTH

AGENCY

Alcohol & Chemical Abuse Council

American Red Cross

Catholic Charities

Cinci Association for the Blind & Visually Impaired

Every Child Succeeds

Mercy Franciscan at St. Raphael's

2012-2013

PROGRAM

Project Success Family Mediation

Disaster Services

Mental Health Counseling

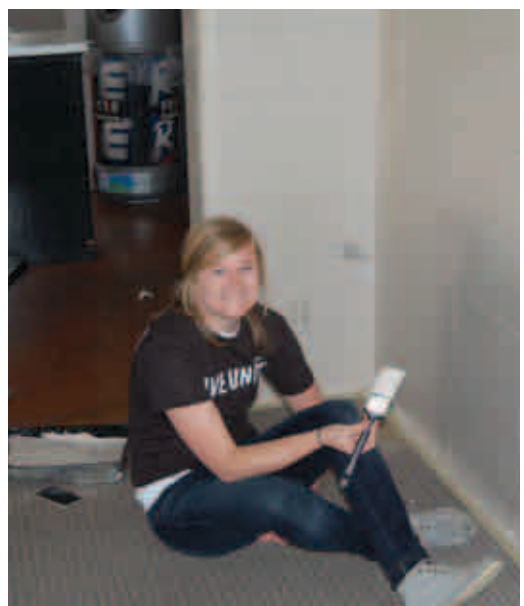
Independent Living and Rehabilitation For Adults

Every Child Succeeds

Medical Outreach

“ALONE WE CAN DO SO LITTLE;
TOGETHER WE CAN DO SO MUCH.”
—HELEN KELLER

DAY OF CARING





THE DAYS OF CARING ARE WONDERFUL OPPORTUNITIES FOR COMPANIES TO ENCOURAGE AND GIVE THEIR EMPLOYEES THE CHANCE TO VOLUNTEER OUT IN THEIR COMMUNITIES AND TO LIVE UNITED.

BUTLER COUNTY UNITED WAY IS GRATEFUL TO OUR VOLUNTEERS AND THE FOLLOWING COMPANIES THAT PARTICIPATED:

- Barnes Aerospace
- Center for Family Solutions
- Butler County Department of Developmental Disabilities
- Fairfield Food Pantry
- Intermec
- Liberty Mutual
- Miami University Hamilton Campus Students, Faculty and Staff
- Rockwell Automation
- University of Phoenix
- U.S. Bank
- Wolseley
- West Chester Hospital



CAMPAIGNS & AWARDS

Butler County United Way

Top Twelve Corporate Campaigns

Barnes Aerospace
Cincinnati Financial Corporation
City of Fairfield
Fifth Third Bank
Liberty Mutual
Macy's Credit and Customer Services
Ohio Casualty, A Division of Liberty Mutual
The Shepherd Color Company
Totes Isotoner Corporation
United Performance Metals
US Bank
West Chester Hospital

Campaigns with 100% Employee Participation

Alcohol & Chemical Abuse Council, SW Ohio
Big Brothers Big Sisters, Butler County
Boys and Girls Club of Hamilton
Butler County United Way
Catholic Charities of SW Ohio, Hamilton
Graydon Head
Greater Hamilton Chamber of Commerce
PARACHUTE: Butler County CASA



Each award has been created by an artist at the InsideOut Studio an initiative through the Butler County Board of Developmental Disabilities. Their program provides an opportunity for artists with disabilities to produce, market, and receive an income from their art; while gaining confidence in their abilities.



Agency Leadership Award **Steve Schnabl**

This award symbolizes teamwork, collaboration with United Way and social service system advocacy. The criteria used to select the recipient is an agency executive who has consistently over a significant span of time

- Stepped forward to collaborate without hesitation
- Actively advocates on behalf of the work of the Butler County United Way
- Provided leadership amongst his/her peers in a quiet and/or active capacity
- Possesses a passion for the work of the Butler County social service system beyond his/her own agency and agency focus area

Jr. Volunteer of the Year Award **Mai Rottinghaus**

This award goes to a junior community volunteer who has devoted significant time and energy to forward the mission of the Butler County United Way. This individual is an active leader who represents youth with an active, articulate and insightful voice.

Outstanding Community Partnership Award **Karen Miller, Boys and Girls Club of Hamilton and Cathy Hester, Living Water Ministries**

Awarded to a collaborative partner that enabled the Butler County United Way to forward its mission in the most expedient and efficient manner. The collaboration enhanced the work of United Way allowing additional resources to be leveraged. This year's Community Collaborative award recognizes TWO agencies who work together to achieve more than they can alone.

Live United Award **Clark Schaefer Hackett**

This award is given to the company that represents the concept of LIVE UNITED throughout the county. Living United is how this company makes decisions. Even though they have many individual offices throughout the region, they encourage their employees to LIVE UNITED through participation in Day of Caring as well as in the community campaign.

Yenn Sohmu Eni Nipa Award **West Chester Hospital**

This award goes to a company or government entity whose employees best exemplify the mission of the Butler County United Way by finding ways to be involved in many aspects of United Way's work.

President's Award **Logan Stone**

Awarded to an active community volunteer who volunteers with the Butler County United Way in multiple capacities. This volunteer supports and significantly augments the work of the professional staff forwarding the Butler County United Way mission.

Otis Briggs Outstanding Volunteer Award **Karen Mueller**

The award is named in honor of W. Otis Briggs Jr., former executive director of the Butler County United Way from 1943 – 1976. During his 33 years of service to the community, Mr. Briggs led the organization through three wars, increased annual fundraising from \$96,000 to close to \$1 million, and was instrumental in the creation of the Hamilton Community Foundation.

CABINET & COUNCILS



Butler County United Way

Campaign Cabinet

Dr. Kevin Joseph, Chair
 Anita Glasmeier
 Margot Halcomb
 John Venturella
 Denise Majikes
 Chip Washienko
 Julie Seil
 Kara Czanik
 Laurie Santel
 David Mancuso
 Lee Geiger
 Tina Osso
 Christine Birhanzi

Youth Action Council

Michelle Abraham
 Jeff Centers
 Robert Clevenger
 Sandra Drewes
 Suzanne Klatt
 Deb Lawrence
 Jerry Newell
 Logan Stone
 Stephanie Worrell
 Cari Wynne

Impact Council

Charles Chalupa
 Daniel Fitzgerald
 Chris Flaig
 Mark Forry
 Jill Gaynor
 Teri Nau
 Stan Stewart
 Logan Stone
 Greg Young

Finance Committee

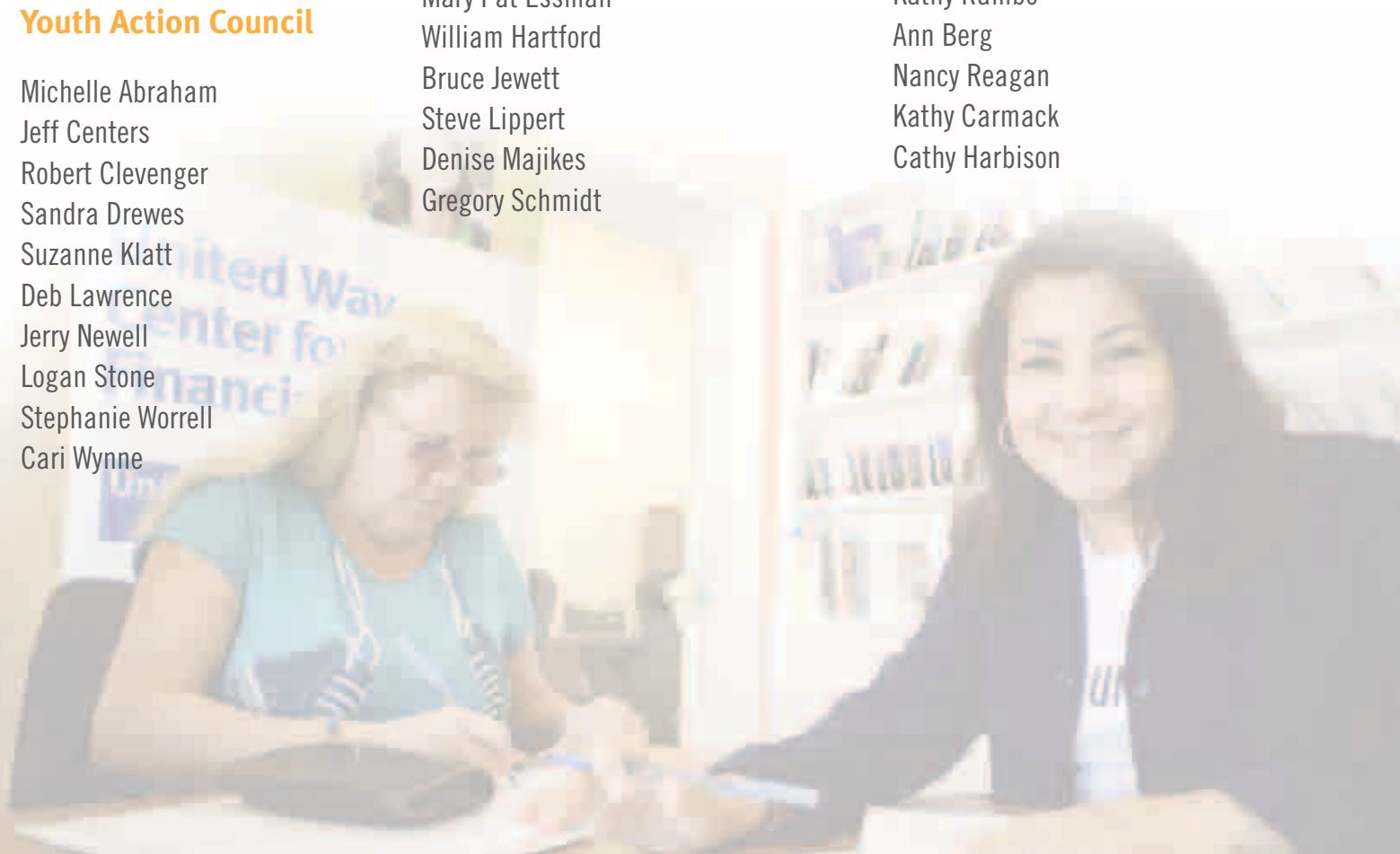
Michael Bain
 Brian Boynton
 Mary Pat Essman
 William Hartford
 Bruce Jewett
 Steve Lippert
 Denise Majikes
 Gregory Schmidt

Self-Sufficiency Action Council

Quinn Caudill
 Craig Clements
 Jill Cohen
 Gary Darlage
 Tony Huff
 Tami Langen
 Denise Majikes
 Christy Morris
 Terry Perdue

Women's Leadership Council

Robin Miller, Co-Chair
 Jessica Hill, Co-Chair
 Kathy Rambo
 Ann Berg
 Nancy Reagan
 Kathy Carmack
 Cathy Harbison



GIVING

Alexis de Tocqueville Society

Within this community we all call home, a special group of visionary leaders is recognized nationally.

They're members of the Alexis de Tocqueville Society, actively supporting the community through their donations of \$10,000 or more with at least \$5,000 directly to United Way. Butler County United Way's Society recognizes our community's largest philanthropic leaders.

The support of Alexis de Tocqueville Society members is key to powering our work to create innovative solutions that get to the core of the most pressing issues in our community, including providing food, shelter and hope for our region's most vulnerable.

If you have any questions about the Society, please feel free to contact Mitchell Willis at 513.863.0800. You can also visit our website for additional information on Butler County United Way's Alexis de Tocqueville group.

MEMBRES DE LA SOCIETE - \$10,000 - \$24,999

Anonymous	Kristen Cox
Bradley R. Mays	Dean Athans

PLATINUM CIRCLE - \$7,500-\$9,999

Vaden Fitton	Anonymous
--------------	-----------

GOLD CIRCLE - \$5,000 - \$7,499

Stephen Von Wahide	Douglas K. Manwaring	Andrew Brossart
Timothy M. Wesolowski	Irvin D. Kieback	Bruce & Louise Jewett
Rex C. Hester	Robert A. & Lee K. Sanders	Sandra L. Murawski

SILVER CIRCLE - \$2,500 - \$4,999

James A. Cleary	Thomas E. Dierking	John T. Marten
Jeffrey Cadle	Peter J. King	Jose Restrepo
Lee & Jackie Parrish	Mark R. Richards	Donna Folberth
Jennifer L. Counts	Jody L. Wainscott	Bruce J. Fuhrmann
Timothy C. Roetker	Douglas B. Zeik	Peggy Johnson
Joseph R. Sander	Mary Stangby	Thomas M. Ryan
Michael H. Katz	Tom Kennard	V. Renee Wooton
Janet S. Littig	Karen L. Mueller	John Glaccum
Anonymous	Mark E. & Linda M. Forry	Patrick J. Healey
David S. Meyer	Peter Y. Lin	Thomas L. Brehm
Kenneth W. Miller	Robert Volkman	Charles J. Helmes
Patricia D. Armstrong	Denise Majikes	Nathan A. Knipper
Shawn Hamilton	Eileen C. King, Ph.D.	Connie M. Roetker
Khozema Shipchandler	Eileen Patricia Cadle	Thomas L. Zenge

BRONZE CIRCLE - \$1,000 - \$2,499

Sheryl Helsinger
Carey N. Curtis
Bruce R. Quisno
Kellie K. Volz
Anonymous
Arthur Joseph Koehler
Kathleen A. Bok
Gary J. Groznik
Kimberly K. Kammerdiener
David L. Moore
Bethia A. Margoshes
Susan Matz
Melissa K. Lowe
Jeff Leisch
Steve Wentzel
Michael & Donna Partridge
Timothy S. Elliott
Robert and Mary Fogler
James W. & Anna P. Heyser
Kevin Joseph, M.D.
Lisa Renee Linton
Michael J. Slattery
Michael E. Vidourek
Susan M. White
Jim & Tammy Sell
Tina Osso
Perry A. Anderson
Christine Hardwick
Michael J. Hibbard
Ricky F. Mathews
David E. Burgio
Annette Tiesmann
Thomas Morris
Gregory R. Byrd
James Cedargren
Anna L. Flaig
Eugene Jacoby
Stephen A. Moese
Eric Hysong
John Niehaus
Benjamin Hinchman, IV
David Hartshorne
Cynthia A. Lyons
Michael and Nora Schablein
Tom Gus Daskalakis
Cynthia L. Conley
Jeffrey Norris
Charles F. Chalupa
Anthony E. & Cynthia Y. Dowrey
Christopher & Anne Flaig
Laura L. Kaiser
Jon K. McLaughlin
Amber Thacker
Kenneth Yelm
Matthew J. Keleshian
Carol Millard Kosarko

Michael Miller
Stephen Milillo
Michael A. Winner
Linda C. Yarger
John A. Monroe
Monica M. Marsh
Jan & Howard Troutman
Jean E. Schechtman
Larry Ybarra
Jennifer Skinner
Robert C. Jung, Jr.
Stanton E. Harper
Richard A. Lux
James R. Danbury
Ted W. Doughman
Michelle Eddy
Donald E. Gamble
Kathleen Klein
Thomas L. Oakey
Arthur & Sandra Pizzano
Keith Richburg
Ron Rohlfing
Joshua A. Smith
Judi L. Sobecki
Michael J. Wirth
Beth A. Zimmerman
Joseph F. Jones
Brent Bumgarner
Bruce W. Johnston
Harold & Sharon Saylor
Joe and Susan Belew
James D. Staton
Stephanie L. Matthews
Rick K. Demmel
David D. Buckner
Kathy D. Carmack
John & Sharon Clemmons
Daniel J. Debrosse
Mary Pat Essman
Lee P. Geiger
Chris H. Gist
Sharon Hedrick
Amoury Hollins
Van K. Joyner
Shawn P. McCabe
Patrick McLaughlin
Donald J. Nooney
Judge John R. & Shirley Moser
Dick and Barbara Munson
Ed Pokora
Johnie K. Schenck
Ralph Simpson
Leo E. Taske
Jeffrey Walton
Penny McVay
Susan McCulley

Joel Fink
Amy and Carl Waldbillig
Chief Donald G. Bennett
Amy Borcherding
Peter K. Shires
Ms. Ruth Elizabeth Bailey
David E. Robinson
Lauren Ross
Larry G. Morgan
Shelly L. Back
Nancy L. Hannan
David A. Yeager
Greg Valandingham
Eric N. Frischmuth
Jennifer Chaltain
Jerome P. Pater
Judge Michael J. and Deby Sage
Caleb Angel
Joni L. Angel
Mark Mercer
Pam Mortensen
Phyllis P. Philley
Steve Ruggiero
Hillary Stevenson
William Ubbes
Shelly Wallpe
Howard Wetzler
Peter G. Ayers
William M. Nartker
Jeannette Wirsch
James S. Bolte
Jamesina A. Fitzgerald
Deborah Pope Sampson
Robin Sensor
Carolyn Winslow
Alan McIntire
Christopher J. Goecke
Louis Armstead
Ann Berg
Pat Carruthers
Denita Carter
Kara Czanik
Dianne & Woody Fitton
Leo A. Geiser, Jr.
Anonymous
Jonathan C. Iverson
Michael F. Policastro
Joel and Marilyn Schmidt
Logan & Donna Stone
Amy Summerville
Daman E. Turner
Mr. Gerald J. Ulland
John & Kathleen Venturella
Robert E. Wagner
Stephen J. Wolterman

LIVE UNITED



SPONSORSHIPS



A VERY SPECIAL THANK YOU TO OUR CORPORATE SPONSORS FOR THEIR
GENEROUS SUPPORT OF OUR COMMUNITY EVENTS AND INITIATIVES!





BOARD OF TRUSTEES

Karen Mueller, Chairperson

Peter Abner

Tom Daskalakis

Vaden “Woody” Fitton

Connie Frazier

Shawn Hamilton

Doug Manwaring

Jim Sell

Amy Waldbillig

Shelly Wallpe

Dave Yeager

Horan Associates, Inc.

Kirsch CPA Group, LLC

UC Health -West Chester Hospital

Great Miami Valley YMCA

American Solutions for Business

Procter & Gamble

Liberty Agency Underwriters

Rockwell Automation

Butler Tech

Community Volunteer

Jaco Waterproofing

“BE OF SERVICE. WHETHER YOU MAKE YOURSELF AVAILBLE TO A FRIEND OR CO-WORKER, OR YOU MAKE TIME EVERY MONTH TO DO VOLUNTEER WORK, THERE IS NOTHING THAT HARVESTS MORE OF A **FEELING OF EMPOWERMENT** THAN BEING OF SERVICE TO SOMEONE IN NEED.” —GILLIAN ANDERSON

INDEPENDENT AUDITORS' REPORT

To the Board of Trustees Butler County United Way

Report on the Financial Statements

We have audited the accompanying financial statements of Butler County United Way (a nonprofit organization) which comprise the statements financial position of as of June 30, 2013 and 2012 and the related statements of activities, functional expenses and cash flows for the years then ended, and the related notes to the financial statements.

Management's Responsibility for the Financial Statements Management is responsible for the preparation and fair presentation of these financial statements in accordance with accounting principles generally accepted in the United States of America; this includes the design, implementation, and maintenance of internal control relevant to the preparation and fair presentation of financial statements that are free from material misstatement, whether due to fraud or error.

Auditor's Responsibility Our responsibility is to express an opinion on these financial statements based on our audits. We conducted our audits in accordance with auditing standards generally accepted in the United States of America. Those standards require that we plan and perform the audits to obtain reasonable assurance about whether the financial statements are free from material misstatement.

An audit involves performing procedures to obtain audit evidence about the amounts and disclosures in the financial statements. The procedures selected depend on the auditors' judgment, including the assessment of the risks of material misstatement of the financial statements, whether due to fraud or error. In making those risk assessments, the auditor considers internal control relevant to the entity's preparation and fair presentation of the financial statements in order to design audit procedures that are appropriate in the circumstances, but not for the purpose of expressing an opinion on the effectiveness of the entity's internal control. Accordingly, we express no such opinion. An audit also includes evaluating the appropriateness of accounting policies used and the reasonableness of significant accounting estimates made by management, as well as evaluating the overall presentation of the financial statements.

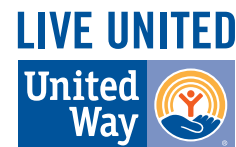
We believe that the audit evidence we have obtained is sufficient and appropriate to provide a basis for our audit opinion.

Opinion In our opinion, the financial statements referred to above present fairly, in all material respects, the financial position of Butler County United Way as of June 30, 2013 and 2012, and the changes in its net assets and its cash flows for the years then ended in accordance with accounting principles generally accepted in the United States of America.

Clark, Schaefer, Hackett & Co.

Butler County United Way
Condensed Consolidated Statements of Financial Position

As of June 30, 2013



Assets	2013	2012
Current assets:		
Cash and cash equivalents	243,929	323,007
Pledges receivable, net	993,655	933,718
Investments	476,638	423,831
Prepaid expenses	1,148	1,811
	1,715,370	1,682,367
Building and equipment:		
Property and equipment	465,665	465,665
Less accumulated depreciation	(462,187)	(454,559)
	3,478	11,106
Noncurrent assets:		
Beneficial interest	73,391	66,004
Custodial cash	42,420	40,242
Board designated cash	316,106	316,254
	431,917	422,500
	2,150,765	2,115,973
Liabilities and Net Assets	2013	2012
Current liabilities:		
Accounts payable	8,238	4,930
Payroll withholdings	-	2,759
Accrued compensation	11,591	15,550
Allocations and designations payable	1,103,426	1,151,965
Deferred income	7,160	13,642
	1,130,415	1,188,846
Noncurrent liabilities:		
Custodial cash liabilities	42,421	40,241
	1,172,836	1,229,087
Net assets:		
Board designated	316,106	316,254
Unrestricted	611,638	517,254
	927,744	833,508
Total unrestricted		
Temporarily restricted	50,185	53,378
	977,929	886,886
	2,150,765	2,115,973





IMAGINE A
WORLD
THAT FOSTERS
HOPE AND
OPPORTUNITY
FOR EVERYONE.

Butler County United Way

323 N 3rd St.

Hamilton, OH 45011

bc-unitedway.org

