



**ADVANCING EDUCATION
INCOME AND HEALTH**

**ADVANCING
THE COMMON GOOD
2015 ANNUAL REPORT**

GIVE. ADVOCATE. VOLUNTEER.

Butler County United Way

bc-unitedway.org



Butler County United Way

Ribbon cutting event for our shared
office location in West Chester.
L to R: David Bruno, Karen Mueller,
Jeffrey Diver, Mag Baker, Joe
Hinson, and Bill Lendl



TABLE OF CONTENTS

Vision and Mission	3
President's Message	4
Community Impact	6
Education	8
Income	9
Health	10
Campaign Cabinet	11
Committees & Councils	12
Volunteer Awards	15
Giving	18
Board of Trustees	21
Auditor's Report	22
Financials	23

BUTLER COUNTY UNITED WAY VISION

Butler County United Way envisions a community where all individuals and families achieve their potential through education, income stability and healthy lives.



BUTLER COUNTY UNITED WAY MISSION

Butler County United Way connects and mobilizes resources to improve lives.

UNITED WAY WORLDWIDE VISION

United Way envisions a world where all individuals and families achieve their human potential through education, financial stability and healthy lives.

Imagine a world that fosters hope and opportunity for everyone.
A world where...

- All children receive a quality education that offers a pathway to a brighter tomorrow.
- The cycle of poverty and financial dependence ends, and productive livelihoods begin for even the most disadvantaged.
- Everyone receives effective health care that improves quality of life.
- Communities not only set significant and measurable goals to advance these fundamental elements of human development, but achieve them.

UNITED WAY WORLDWIDE MISSION

To improve lives by mobilizing the caring power of communities around the world to advance the common good.

To do this we will...

- Ignite a worldwide social movement, and thereby mobilize millions to action – to give, advocate and volunteer to improve the conditions in which they live.
- Galvanize and connect all sectors of society – individuals, businesses, nonprofit organizations and governments – to create long-term social change that produces healthy, well-educated and financially-stable individuals and families.
- Raise, invest and leverage billions of funds annually in philanthropic contributions to create and support innovative programs and approaches to generate sustained impact in local communities.
- Hold ourselves accountable to this cause through our steadfast commitment to continually measure – in real terms – improvement in education, income and health.

BUTLER COUNTY UNITED WAY GUIDING PRINCIPALS

We will:

- Be accountable: transparently measuring results
- Be ethical
- Be fair and impartial
- Be engaged and responsive to community needs
- Be a good neighbor: partnering with stakeholders to make a difference in the community
- Be forward thinking: proactive and adaptable to community needs

EDUCATION. INCOME. HEALTH.

Butler County United Way is proud to be part of a network of nearly 1,800 United Ways in more than 40 countries and territories worldwide. As the largest privately-funded nonprofit in the world, we focus on our three pillars of education, financial stability and healthy lives – the building blocks for a good life and a strong community.



In 2014, the Board of Trustees formed a Strategic Framework to identify success factors and key positions as a way to continue to improve and strengthen our foundation for success in the future. Those key success factors included improving our data, expanding our relationships with community partners and increasing revenue. From that foundation, we began to set some strategic goals and identified essential steps to improve our performance and resources. Our strategic goals were to create and execute a targeted donor marketing plan; build a robust volunteer network engaged with partner agencies; develop an infrastructure to gather, measure and analyze data; identify and engage community partners; and establish community outcome goals for each pillar of focus. In addition, we continued to focus on our mission to connect and mobilize resources to measurably improve lives in Butler County.

To begin, we recognized the need to have a targeted focus in regard to marketing, communication and database management. In March, we hired Pam Cottle as our Director of Marketing and Communications. Pam brings over 25 years of experience in marketing and database management. Since that time, we have implemented a new interactive website, improved our branding efforts through social media, employed the use of demographic tracking through social media analytics for retargeting of donors and volunteers, and began assessing targeted marketing potential through a variety of digital marketing infrastructures. It takes time to build these models, but early indicators show great promise with these methods.

In the area of Impact, we began to gather and measure relevant data to gauge our impact in the areas of health, education and income. We presented this data to our Board of Trustees, as well as the Impact Council, for reaction and interpretation. From this data, the Impact Council will set future goals for each pillar. As with all new approaches, it is important to engage the communities we serve and as such, we anticipate a need to have several “Community Conversation” events to gather feedback and perspective in prioritizing our goals for the future.

Over the last five years, we have experienced a continued decline in giving throughout Butler County and 2014 was no exception. Our campaign came in at a disappointing \$1,661,000. However, as our county continued to grow, the need throughout also grew. In response, we made a strategic decision to allocate funds to programing throughout Butler County in excess of campaign revenue; it is not our intention to continue this practice in the future. With our new strategic direction, we hope to see increased awareness and improved revenue streams for the future. We have continued to strengthen our relationships with community partners. We have had a more focused approach and have engaged in ongoing discussions with the community foundations in our service area, Butler County Educational Service Center, and local business leaders to explore how we can combine resources to improve early childhood education, workforce development and public transportation. It is only through collaboration and partnership that will we achieve lasting change and collective impact in our region. It is how we can truly Live United!

To our partners, donors, advocates and volunteers, we extend our heartfelt thanks. The compassion shown to your neighbors, your generous spirit and your dedication to our mission is what fuels the work we do every day. Behind all of those impact numbers are real people whose lives are forever changed for the better and you are the driving force that made it possible.

When we work together, we rise together! We will continue to work on improving Butler County United Way, striving for a community where all individuals and families achieve their potential through education, income stability and healthy lives.

Best regards,

A handwritten signature in dark ink, appearing to read 'Margaret'.

Margaret S. Baker
President & CEO
Butler County United Way

WHEN WE **LIVE UNITED**,
THERE'S NOTHING WE
CAN'T DO.

BUTLER COUNTY UNITED WAY STAFF

As of July 1, 2015



Margaret Baker
President and CEO



Krystal Tipton
Director of Community Impact



Pam Cottle
Director of Marketing
and Communications



Jan Troutman
Director of Finance



Jennifer Johnson
Administrative Assistant



Mitchell Willis
Director of
Resource Development



It took being homeless, forced to seek shelter under the West Middletown Bridge, as a harsh winter approached in December 1997, for Darryle Short to realize that he desperately needed to change.

Darryle Short grew up in a normal home with his brother, sister and hardworking parents. However, his choices during his early years were not always in line with the principles instilled in him as a child.

"I didn't realize this until I was two or three years sober, but I was going through life and using [drugs] because of the trauma I experienced as a child at the hands of a family member," said Short, "I was trying to go through life and prove that nothing had happened to me."

He was defiant and self-centered, often in trouble at school and rebellious to authority figures. He dropped out of high school during his senior year to join the military, but soon was discharged. From there, his life began spiraling downward.

"My drug of choice was 'Yes'; whatever was offered to me was what I took," said Short.

Short had been homeless on and off throughout his life, but it had never lasted more than a week. After a period of 20 years, Short said the people he relied on got sick of his behavior. So as he sat under the bridge on that cold night in December and envisioned his life, he realized there had to be more.

He went to his mother and stepfather's home and begged to be let in. He was denied. Short said that his mom's response to his pleas that night was, "If you die you die; I'm giving you over to God. I'm done watching you kill yourself -- because it's killing me."

They had offered to help him many times before, but were ultimately left to pick up the pieces after he returned to his old ways. Somehow, Short knew this time was different, that he had to make a change. So he kept knocking and begging until they finally let him in, on one condition: that he would seek treatment. Trust was no longer a part of their relationship, so when his parents would leave the house, they would lock Short in the basement to keep him from stealing their possessions. And he was fine with that.

That same month, he took the first steps to changing his life and entered treatment at Sojourner Recovery Services, a Butler County United Way funded agency. "Being able to go to treatment and get sober, I wouldn't have been able to do it without Butler County United Way," said Short, "They put me in a position to look at my life and where it was, and plan on how to get out of my situation and rise above it."

The road to recovery wasn't easy, but Short had a mission. Throughout his early life, he had fathered seven children with five different mothers. He wanted to better himself and earn the respect of those children; he wanted to become a functioning member of society.

In May 1998, just a month after completing treatment, he went back to school and earned his GED from Middletown High School. Four years later, Short returned to Sojourner, not as a patient, but as a counselor. It was his way of giving back, by being able to relate to those patients going through the same thing he had experienced.

"For most people, who suffer from addiction, there are similarities to what got them there," said Short, "We're all individuals but the story seems to be the same. Addicts have a tendency to trust more and open up to someone who's been where they've been, and that's where the real healing can begin."

Now, clean and sober for 17 ½ years, Short continues to work at Sojourner. He's worked in several capacities there, but currently holds the position as Director of Staff Development.

"I made some bad life choices, but I am so grateful that human service programs exist like the one I went through, to get me back on track. Otherwise, what would have been the alternative?" said Short, "I was a drain on society and the system. Now, I am a productive member of our community and proud to say that I have built relationships with all of my children and family."

Currently, he is working toward earning an Associate's Degree in Criminal Justice so that he can continue to give back at a higher capacity.

"It's about fostering communities, sharing hope and saving lives," said Short. "Butler County United Way continues to fund programs through Sojourner because they see that they are making a difference."

Give. Advocate. Volunteer. When we come together, our communities are strengthened and people like Darryle can find their human potential. "You can call me the poster child for United Way," said Short, "I am living proof of what these programs can do."

EDUCATION. INCOME. HEALTH.

Below is a listing of education-related programs along with a short description of each program. These programs are currently receiving funding from Butler County United Way.



PROGRAM	PARTNER AGENCY	DESCRIPTION
Afterschool and Summer Programming	Boys & Girls Club of Hamilton	This program encourages positive attitude and behavior while building strong self esteem.
Backpack Program	Shared Harvest Foodbank	This program provides nutrition to hungry school children over the weekend to maintain mental stamina.
Building Success	Hamilton Living Water Ministry	This program provides an enrichment program and strong educational foundation for early childhood development.
Every Child Succeeds	Butler County Every Child Succeeds	This program focuses on home visitations to encourage good parenting skills for proper child development.
Girls' Inc./Youth Literacy	YWCA of Hamilton	This program focuses on literacy, empowerment, and leadership skills for young girls.
Leadership Experience	Girl Scouts of Western Ohio	This program provides empowerment and leadership skills for young girls.
One-to-One Mentoring	Big Brothers Big Sisters of Butler County	This program provides mentors to at-risk youth.
Parachute: CASA	Butler County CASA	This program provides a platform for advocates to speak on behalf of and mentor abused children.
Project Learn	Boys & Girls Club of West Chester/Liberty	This program focuses on building a foundation for students to become life-long learners.
School-Based Support Services	LifeSpan, Inc.	This program provides academic and emotional support to those students who are at risk within the school system.
Special Olympics	Butler County Special Olympics	This program encourages adults and children with developmental disabilities to engage in competitive activities.
Tee Up for Greatness	The First Tee of Greater Miami Valley	This program helps youth to build character as well as life and relationship skills through exposure to the game of golf.
The First Tee Life Skills Experience	The First Tee of Greater Miami Valley	This program provides the appropriate coaches' training in youth development in conjunction with Tee Up for Greatness.



EDUCATION. INCOME. HEALTH.

Below is a listing of income-related programs along with a short description of each program. These programs are currently receiving funding from Butler County United Way.

PROGRAM	PARTNER AGENCY	DESCRIPTION
Build Up Academy	S.E.L.F. (Supports to Encourage Low-income Families)	This program is a comprehensive construction training program that provides individuals with basic and technical skills for future employment.
Butler County Rape Crisis Services	Women Helping Women	This funding provides counseling and emotional support to women in crisis.
Dove House	YWCA of Hamilton	This funding provides shelter to mentally and physically abused women.
Emergency Shelter	Hope House	This funded program provides emergency living shelter and food to adults in crisis.
Financial Counseling	LifeSpan, Inc.	This funding provides one-on-one counseling to individuals to stabilize their financial situation.
Food Pantry	Lighthouse Food Pantry	This funding provides food and basic needs to individuals and families in need.
Foodbanking	Shared Harvest Foodbank	This funding provides food and basic needs to food pantries across Butler County as well as families in need.
Goodman Place	YWCA of Hamilton	This funding provides mental health counseling and emotional support to the women of Dove House and other homeless women.
Hamilton Adult Education	YWCA of Hamilton	This funding provides adult education opportunities to individuals in pursuit of a General Education Degree.
IDA (Individual Development Account)	S.E.L.F.	This program provides a blueprint to individuals who are interested in starting a small business.
JOBS NOW!	S.E.L.F.	This program is a 10-week curriculum that provides individuals with the skills necessary to obtain employment.
People Working Cooperatively Home Repair and Modification	People Working Cooperatively	This program provides needed home repair and/or home modification to homeowners so that they may continue to live in a safe environment.
Project Independence	Wesley Community Services	This program provides transportation services and other essential needs to senior citizens.
Supporting Success	Hamilton Living Water Ministry	This program is a one-stop center that provides basic skills (for example, computer, job search, and translation services) to adults in need.

EDUCATION. INCOME. HEALTH.

Below is a listing of health-related programs along with a short description of each program. These programs are currently receiving funding from Butler County United Way.



PROGRAM	PARTNER AGENCY	DESCRIPTION
Family Mediation	Envision Partnerships	This program provides mediation to families to promote healthy relationships.
Independent Living & Rehabilitation	Cincinnati Association for the Blind and Visually Impaired	This program provides health services to the blind and visually impaired.
Medical Outreach	Mercy Franciscan at St. Raphael	This program provides medical services to individuals and families to promote healthy lives.
Mental Health Counseling	Catholic Charities, Southwest Ohio	This program provides mental health counseling to school-age children.
Perinatal Services	Sojourner Recovery Services	This funding provides education as well as intervention to pregnant women regarding the risks and harm of substance abuse during pregnancy.
Project Success	Envision Partnerships	A school-based, prevention program outlining the dangers of substance abuse.

SPECIAL COLLABORATIVE

Program: Booker T. Washington Community Center Collaboration

Partner agencies supporting this program include Great Miami Valley YMCA, Boys & Girls Club of Hamilton, Fitton Center for Creative Arts, Miami University Hamilton, S.E.L.F., and the YWCA of Hamilton.

This program supports multiple programs at Booker T. Washington focusing on our three pillars of education, income stability and healthy lives.





CAMPAIGN CABINET

Tim Abbott

Duke Energy – Fairfield

Christine Birhanzi

Sojourner Recovery, Inc.

Lee Geiger

Graydon Head

Anita Glasmeier

Liberty Mutual Insurance

Doug Manwaring

Liberty Mutual Insurance

Tina Osso

Shared Harvest Foodbank

Laurie Santel

Stay, Play, Made Simple

Bill Staler

LifeSpan, Inc.

John Venturella

Clark Schaefer Hackett

Chip Washienko

UC Health – West
Chester Hospital

COMMITTEES AND COUNCILS

FINANCE COMMITTEE

Purpose: The Finance Committee advises the President/CEO and Director of Finance about financial matters such as the budget and investments.

Mike Bain, Chair
Mowry, Marty & Bain, LLC

Bill Hartford
US Bank (Retired)

Bryan Boynton
Stephenson & Warner, Inc.

Steve Lippert
Hamilton Caster & Manufacturing Company

Mary Pat Essman
Lane Public Library
(Retired)

Greg Schmidt
Ohio Casualty (Retired)

Dan Griesinger
US Bank

Ron Smith
American Printing

MARKETING & DEVELOPMENT COMMITTEE

Purpose: The Marketing and Development Committee advises the Director of Marketing and the Director of Resource Development in regard to marketing strategy and new business partnership opportunities.

Connie Frazier, Chair
American Solutions for Business

Carla Messer
BestWorks

Shawn Hamilton
Procter & Gamble

Amy Waldbillig
Cincinnati State

Doug Manwaring
Liberty Mutual Insurance

GOVERNANCE & NOMINATING COMMITTEE

Purpose: The Governance and Nominating Committee monitors the operations of the Board of Trustees as well as identifies potential new Board members.

Catherine Evans, Chair
Millikin & Fitton Law Firm

Woody Fitton
Great Miami Valley YMCA

Pete Abner
Kirsch CPA Group, LLC

Karen Mueller
Horan Associates, Inc.

Tom Daskalakis
UC Health - West Chester
Hospital

Larry Mulligan
First Financial Bank

WOMEN'S LEADERSHIP COUNCIL

Purpose: The mission of the Women's Leadership Council is to strengthen our community and change lives in Butler County through collaborative efforts of women leaders who invest in Butler County United Way. This dynamic group of community leaders gives their time, talent and measurable impact on women and children in Butler County.

Joni Angel
Logicalis

Cathy Harbison
Baysore's Flower Shop

Ann Berg
First Financial Bank
(Retired)

Jessica Hill
Stites & Harbison, PLLC

Kathy Carmack
First Financial Bank
(Retired)

Kathy Rambo
West Chester-Liberty
Chamber Alliance



Butler County United Way

IMPACT COUNCIL

Purpose: To actively participate and guide Butler County United Way's efforts to identify the community's needs in the areas of self-sufficiency, preparing children/youth to succeed in school and life, and helping individuals to live healthy lives. The Impact Council will collect and report on data, which allows them to aggregate the results and report to the community how Butler County United Way supported programs and services are performing as a whole.

Lonnie Tucker, Chair
Lakota Local Schools
(Retired)

Michael Albrecht
Fairfield City Schools

Angie Brown
BIYTC Life Coaching

Carolyn Coley
Empty Bowls Project

Mark Forry
Procter & Gamble
(Retired)

Chrystal Green
Parent Volunteer

Kim McKinney
Community Volunteer

Keith Millard
Hamilton City Schools

Teri Nau
Talbert House

Michael Walsh
Community Volunteer

Heather Wells
Family & Children
First Council

ACTION COUNCILS

Purpose: To identify and support strategies and solutions that move us toward a desired vision for our community as charged by the Butler County United Way Impact Council. Each action council focuses on research, the experiences of other communities, best practices, and other tools to identify "what works" in addressing the root causes of the issue identified by the Impact Council.

EDUCATION ACTION COUNCIL

Brian Chamberlain
Deloitte & Touche

Chris Klefeker
Miami University Hamilton

Brandon Chung
Richard T. Allen Academy

Deb Lawrence
Employers Health

Rolanda Flowers
Richard T. Allen Academy

HEALTH ACTION COUNCIL

Patrick Baker
UC Health-West
Chester Hospital

Laurin Sprague
Hamilton City Schools
(Retired)

Samina Sohail
Westside Adults &
Pediatrics

INCOME ACTION COUNCIL

Dena Huentelman
General Electric
(Retired)

Shelly Wallpe
Butler County Educational
Service Center

Suzanne Klatt
Miami University Hamilton

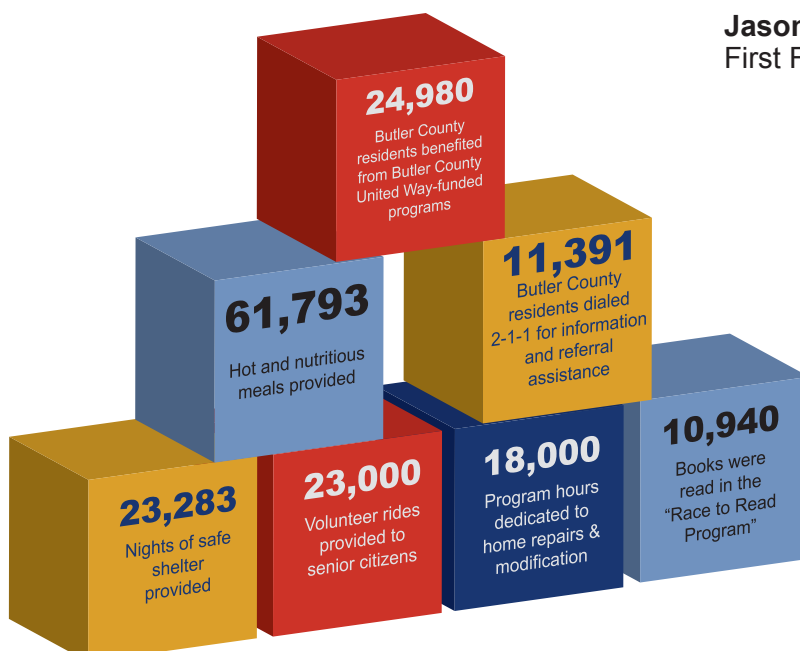
Dave Yeager
Jaco Waterproofing

Jason Newport
First Financial Bank

INTERN

Cody Dunn Abraham

IMPACT ON BUTLER COUNTY



TOP CAMPAIGNS FOR 2014-2015

Barnes Aerospace
City of Fairfield
City of Hamilton
Duke Energy Fairfield
Fifth Third Bank
First Financial Bank
Fort Hamilton Hospital
General Electric Evendale
Employee Community Services Fund
Hamilton City School District
Johnson & Johnson
Lakota Local Schools
Liberty Mutual Insurance
Macy & Co., Inc.
Meijer, Inc.
Mercy Health
Ohio National Financial Services
Shepherd Color Company
The Cincinnati Insurance Companies
The Procter & Gamble Company
Totes Isotoner Corporation
UC Health – West Chester Hospital
United Performance Metals
UPS, Inc.
US Bank
Verso Corporation

PACESETTER CAMPAIGNS

Boys & Girls Club of Hamilton, Inc.*
Boys & Girls Club of West Chester/Liberty Township*
Butler County Government Offices
Butler County United Way*
Catholic Charities of Southwest Ohio
City of Hamilton
Envision Partnerships*
Great Miami Valley YMCA
Lifespan, Inc.
Meijer, Inc.
Mother Teresa Catholic Elementary School
PARACHUTE: Butler County CASA*
S.E.L.F.
Shared Harvest Foodbank*
Shepherd Color Company
Sojourner Recovery Services
Target Stores
West Chester Township Administration
Women Helping Women*
YWCA of Hamilton

*Denotes 100% Employee Participation

VOLUNTEER HOURS

Total Volunteer Hours	5,406
Board of Trustees	346
Campaign Volunteers	678
Community Impact Volunteers	668
Day of Caring Volunteers	2,670
Women's Leadership Council	428
Office/Intern Volunteers	616

VOLUNTEER AWARDS



AGENCY LEADERSHIP AWARD

Bill Staler

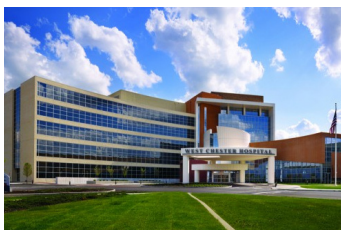
This award symbolizes teamwork, collaboration with United Way and social service system advocacy. Bill is the Executive Director of LifeSpan, Inc., a partner agency, and received this award for consistently providing leadership among his partner agency peers in support of Butler County United Way.



JR. VOLUNTEER OF THE YEAR AWARD

Cody Dunn

This award is given to one or more youth volunteers who have contributed significantly to the Butler County United Way mission and other community organizations. A Miami University Hamilton student majoring in Communications, Cody was an active leader who represented youth with an articulate and insightful voice.



OUTSTANDING COMMUNITY PARTNERSHIP AWARD

UC Health-West Chester Hospital

Awarded to a collaborative partner that enabled Butler County United Way to forward its mission in the most expedient and efficient manner. As a major employer in the West Chester area, UC Health-West Chester Hospital gives back to the community through employee contributions as well as volunteer opportunities.



LIVE UNITED AWARD

Verso Corporation

This award is given to a company that represents the concept of LIVE UNITED. Although they have many individual offices throughout the region, Verso Corporation consistently symbolized how to LIVE UNITED by encouraging their employees to participate in Days of Caring as well as the community campaign.



PRESIDENT'S AWARD

Tina Osso

Awarded to an active community member who volunteers with the Butler County United Way in multiple capacities, Tina has given endlessly and tirelessly and is always ready to collaborate on projects to benefit the community.



W. OTIS BRIGGS, JR. OUTSTANDING VOLUNTEER OF THE YEAR AWARD

Rob Clevenger

This award is named in honor of W. Otis Briggs, Jr., former executive director of Butler County United Way from 1943-1976. During his tenure, Mr. Briggs led the organization through three wars, increased annual fundraising from \$96,000 to close to \$1 million, and was instrumental in the creation of the Hamilton Community Foundation. Rob served as a member of our Impact Council and was a valuable voice on behalf of our partner agencies.



Beldon Corporation Day of Caring at Boys & Girls Club of West Chester/Liberty



Target Day of Caring at West Chester Activity Center



US Bank Day of Caring at Mercy Health at St. Raphael



Study of the United States Institute on Civic Engagement via Miami University Hamilton Day of Caring at American Red Cross



DAY OF CARING 365

Miami University Hamilton Day of Caring at Hamilton Living Water Ministry



Day of Action 2015 Project



Study of the United States Institute on Civic Engagement via Miami University Hamilton Day of Caring at S.E.L.F.



Days of Caring are wonderful opportunities for companies to encourage and give their employees the chance to volunteer out in their communities and to Live United. Butler County United Way is grateful to our volunteers and the following companies that participated:



Miami University Hamilton Martin Luther King Day of Service at Booker T. Washington Community Center

Belden Corporation at Boys & Girls Club of West Chester/Liberty

Hamilton Group Work Camp via S.E.L.F.

Miami University Martin Luther King Day of Service at Booker T. Washington Community Center

Miami University at Hamilton Living Water Ministry, Inc.

Pathways Church of Fairfield Day of Action, Summer Feeding Program at Meadow Ridge

Study of the United States Institute on Civic Engagement via Miami University Hamilton at American Red Cross

Study of the United States Institute on Civic Engagement via Miami University Hamilton at S.E.L.F.

Target Corporation at West Chester Activity Center

US Bank at Mercy Health at St. Raphael



Hamilton Group Work Camp via S.E.L.F.

GIVING

ALEXIS DE TOCQUEVILLE SOCIETY

The Tocqueville Society derives its name from Alexis de Tocqueville, a French aristocrat of the 19th century who was inspired by the American spirit of philanthropy. His observations formed the basis of 'Democracy in America', a detailed study of American society and politics, published in two volumes in 1835 and 1840.

Tocqueville wrote extensively on the power of voluntary giving for the common good. Butler County United Way's Society recognizes our community's largest philanthropic leaders. The support of these leadership givers is a key component in powering our work to create innovative solutions that get to the core of the most pressing issues in our community.

If you have any questions about the Society, please feel free to contact Mitchell Willis at 513.785.2341 or visit our website at bc-unitedway.org.

PLATINUM CIRCLE \$7,500-\$9,999

Vaden Fitton
Bruce W. Lavash

GOLD CIRCLE \$5,000-\$7,499

Andrew Brossart
James A. Cleary
Anonymous
Sandra L. Murawski
John & Kathleen Venturella
V. Renee Wooton

SILVER CIRCLE \$2,500-\$4,999

Perry A. Anderson
Joni L. Angel
Patricia D. Armstrong
Jim & Margaret Baker
Mary Beth Blake
Thomas L. Brehm
Eileen Patricia Cadle
Neil & Honi Cohen
Ellen Colyer
Michael V. Curran
Carey N. Curtis
Thomas E. Dierking
Neal Dunsieith
Timothy S. Elliott
Donna J. Folberth
Bill & Jackie Groth
Shawn Hamilton
Sheryl Helsinger
Peggy Johnson
Thomas Kennard
Eileen C. King
Nathan A. Knipper

Arthur Joseph Koehler
Jeffrey Liesch
Janet S. Littig
Douglas B. Manwaring
John T. Marten
John F. McKibben
Kenneth W. Miller
Karen L. Mueller
Lee & Jackie Parrish
Michael & Donna Partridge
Mark R. Richards
Jeffrey R. Risk
Connie M. Roetker
Timothy C. Roetker
Thomas M. Ryan
Joseph R. Sander
Judi L. Sobecki
G. Thomas Thornley
Robert & Mary Lou Volkman
Stephen Von Wahide
Douglas B. Zeik
Thomas L. Zenge

BRONZE CIRCLE \$1,000-\$2,499

Tim & Kathy Abbott
Angelica M. Anderson
Carol Applegeet
Peter G. Ayers
Ruth E. Bailey
David Baumgartner
Shelly L. Beck
Joe & Susan Belew
Donald G. Bennett
Catherine & Joe Bidleman
Ann M. Bowling
Cheryl Brackman
David D. Buckner
Brent Bumgarner
David E. Burgio
Gregory R. Byrd
Javier Cano
Kathy D. Carmack
Charles L. Carrier
Pat Carruthers
Charles F. Chalupa
John & Sharon Clemmons
Debra A. Cook
Cynthia R. Craycraft
Kara Czanik
Anonymous
Rick & Kathy Demmel
Theresa M. Derickson, MD
Timothy A. Dickens
Brian Doran
Charles M. Dragoo
Richard Duggan
Laura A. Elenich
Mary Pat Essman
Woody & Dianne Fitton
Jamesina A. Fitzgerald
Anna L. Flaig
Richard E. Flamm
David J. Flavin
Robert & Mary Fogler
Aaron A. Foster
Michael Fox
Karen J. Frank
Philip Galioto
Lee P. Geiger
Leo A. Geiser, Jr.
Pat Gibney
Chris H. Gist
Gary J. Groznik
Kathleen T. Gubser
Christine Hardwick
Stanton E. Harper
James W. & Anna P. Heyser
Benjamin Hinchman
Amoury T. Hollins
Laura L. Hoppa
Richard L. Horvath
Susan L. Joa
Bruce W. Johnston
Joseph F. Jones
Van K. Joyner
Laura L. Kaiser
Kimberly K. Kammerdiener
Audrey J. Kerby
Irvin D. Kieback
Carl G. Kindberg
Raymond Kinsey
Kathleen Klein
Carol M. Kosarko

Dale O. Kozma
Phillip Krekel
Roger Lagreca
Tamara L. Laine
Shaun Lammert
Deb Lawrence
James Lee
Peter Y. Lin
Jim Lippert
Richard A. Lux
Cynthia A. Lyons
Bethia A. Margoshes
Ricky F. Mathews
Stephanie L. Matthews
Anonymous
Shawn P. McCabe
Susan McCulley
Jon K. McLaughlin
Gary L. McMahan
Matthew G. McNally
Penny S. McVay
Tracey M. McVey
Mark Mercer
Teresa Merk
Stephen Millilo
James G. Miller
Steven W. Miller
Stephen A. Moese
James A. Moore
Thomas Morris
Pamela S. Mortensen
Honorable John R. & Shirley Moser
Robin M. Mueller
Dick & Barbara Munson
Scott T. Neidhold
John Niehaus
Jeffrey Norris
Linda Novitski
Robert A. O'Brien
Nathaniel Ormbrek
Tina Osso
Marie Palladino
Beth E. Parris
Jerome P. Pater
Anonymous
Terry L. Perdue
Ragini S. Peters
Phyllis P. Philley
Arthur & Sandra Pizzano
Ed Pokora
Michael F. Policastro
Sherri L. Randall
Keith Richburg
David E. Robinson
Benjamin M. Rosensweet
Steve Ruggiero
Karen Said
Deborah P. Sampson
Drs. Robert A. & Lee K. Sanders
Gerald Sasser
Harold & Sharon Saylor
Michael & Nora Schablein
Jean E. Schechtman
Joel & Marilyn Schmidt
Paul W. Schneider
Jim Scott
Virginia Segbers
Jim & Tammy Sell

Anonymous
Peter K. Shires
James C. Sims
Jennifer Skinner
Joshua A. Smith
Mark Smith
Anonymous
Melissa & Bill Solazzo
Anonymous
Logan & Donna Stone
Amy Summerville
Michel L. Sussman
Brett E. Swensgard
Shannan Tanner
Leo E. Taske
Roger Telvick
Barbara Thiel
Annette Tiesmann
Timothy & Krystal Tipton
Greg Valandingham
Michael E. Vidourek
Todd M. Wachter
Kathy Wagonfield
Carl & Amy Waldbillig
Mary Walston
Jeffrey Walston
Kelda Weber
Robert Weigel
Nancy Wenning
Howard Wetzler
Susan M. White
Theodore F. Wilke
Jerry D. Williams
Mitchell Willis & Jon Yslas
Carolyn Winslow
Jeannette Wirsch
Stephen J. Wolterman
David A. Yeager
Kenneth Yelm





Campaign Kick Off Breakfast at
Booker T. Washington Center
sponsored by Clark Schaeffer
Hackett and Duke Energy.

BUTLER COUNTY UNITED WAY SPONSORSHIPS 2014 - 2015

A special THANK YOU to our Corporate Sponsors for their generous support of our community events and activities!

Campaign Kickoff Sponsor



Campaign Kickoff Sponsor



Volunteer Recognition Sponsor



Zombie Run Sponsor



Zombie Run Sponsor



BOARD OF TRUSTEES



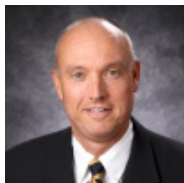
Karen Mueller
Chairperson
Horan Associates, Inc.



Doug Manwaring
Vice Chairperson
Liberty Mutual
Insurance



Catherine Evans
Secretary
Millikin & Fitton Law
Firm



Mike Bain
Treasurer
Mowry, Marty & Bain,
Inc.



Margaret Baker
President/CEO
Butler County United
Way



Pete Abner
Kirsch CPA Group, LLC



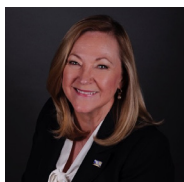
John Clemmons
Clemmons &
Wolterman



Tom Daskalakis
UC Health – West
Chester Hospital



Woody Fitton
Great Miami Valley
YMCA



Connie Frazier
American Solutions for
Business



Shawn Hamilton
Procter & Gamble



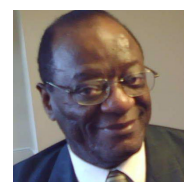
Larry Mulligan
First Financial Bank



Jim Sell
Rockwell Automation



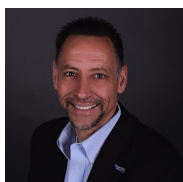
Samina Sohail
Westside Adult &
Pediatric Care



Lonnie Tucker
Lakota Local Schools
(Retired)



Amy Waldbilling
Cincinnati State



David Yeager
Jaco Waterproofing



Butler County United Way

Independent Auditor's Report



To the Board of Trustees Butler County United Way

Report on the Financial Statements

We have audited the accompanying financial statements of Butler County United Way (the Organization), which comprise the statement of financial position as of June 30, 2015, and the related statements of activities, functional expenses and cash flows for the year then ended, and the related notes to the financial statements.

Management's Responsibility for the Financial Statements

Management is responsible for the preparation and fair presentation of these financial statements in accordance with accounting principles generally accepted in the United States of America; this includes the design, implementation, and maintenance of internal control relevant to the preparation and fair presentation of financial statements that are free from material misstatement, whether due to fraud or error.

Auditor's Responsibility

Our responsibility is to express an opinion on these financial statements based on our audit. We conducted our audit in accordance with auditing standards generally accepted in the United States of America. Those standards require that we plan and perform the audit to obtain reasonable assurance about whether the financial statements are free from material misstatement.

An audit involves performing procedures to obtain audit evidence about the amounts and disclosures in the financial statements. The procedures selected depend on the auditor's judgment, including the assessment of the risks of material misstatement of the financial statements, whether due to fraud or error. In making those risk assessments, the auditor considers internal control relevant to the entity's preparation and fair presentation of the financial statements in order to design audit procedures that are appropriate in the circumstances, but not for the purpose of expressing an opinion on the effectiveness of the entity's internal control. Accordingly, we express no such opinion. An audit also includes evaluating the appropriateness of accounting policies used and the reasonableness of significant accounting estimates made by management, as well as evaluating the overall presentation of the financial statements.

We believe that the audit evidence we have obtained is sufficient and appropriate to provide a basis for our audit opinion.

Opinion

In our opinion, the financial statements referred to above present fairly, in all material respects, the financial position of Butler County United Way as of June 30, 2015, and the changes in its net assets and its cash flows for the year then ended, in accordance with accounting principles generally accepted in the United States of America.

Prior Period Financial Statements

The financial statements of Butler County United Way as of and for the year ended June 30, 2014, were audited by other auditors whose report dated January 20, 2015, expressed an unmodified opinion on those statements.

Elliott Davis Decosimo
Cincinnati, Ohio
October 29, 2015

Butler County United Way
Condensed Consolidated Statements of Financial Position

As of June 30, 2015 & 2014



	2015	2014
Current Assets		
Cash and cash equivalents	150,645	295,945
Pledges receivable, net	916,348	890,290
Investments, at fair value	503,412	530,859
Prepaid expenses	1,495	2,482
Total current assets	1,571,900	1,719,576
Property and equipment, net	40,629	23,546
Noncurrent assets		
Beneficial interest in assets held by others	86,004	84,063
Custodial cash	23,179	8,560
Board designated cash	315,874	315,874
Total noncurrent assets	425,057	408,497
Total assets	2,037,586	2,151,619
Liabilities and Net Assets		
Current liabilities		
Accounts payable	13,001	12,427
Accrued compensation	645	3,640
Allocations and designations payable	1,143,516	1,105,494
Designations payable to other United Way organizations	19,424	12,088
Deferred revenue	300	2,475
Total current liabilities	1,176,886	1,136,124
Noncurrent liabilities		
Custodial cash obligations	23,179	8,560
Net assets		
Board designated	315,874	315,874
Unrestricted	467,547	638,061
Total unrestricted	783,421	953,935
Temporarily restricted	54,100	53,000
Total net assets	837,521	1,006,935
Total liabilities and net assets	2,037,586	2,151,619

Butler County United Way
323 N 3rd St.
Hamilton, OH 454011
bc-unitedway.org



Butler County United Way