

GIVE. ADVOCATE. VOLUNTEER.

2016

Annual Report



Butler County United Way

**ADVANCING THE COMMON GOOD THROUGH
EDUCATION, INCOME AND HEALTH**





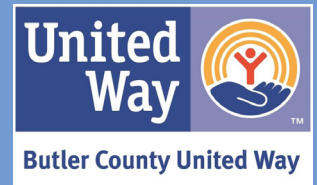
“Stone Soup” Day of Action
Pictured: Stephanie Cockram (Big Brothers
Big Sisters of Butler County), Lou Alaimo
(Community Volunteer), Joshua Smith (City
Manager, City of Hamilton),
Lonnie Tucker (Lakota Community Council).

TABLE OF CONTENTS

Vision and Mission	3
President’s Message	4
Community Impact	6
Education	8
Income	9
Health	10
Campaign Cabinet	11
Committees & Councils	12
Volunteer Awards	15
Giving	18
Board of Trustees	26
Auditor’s Report	27
Financials	29

BUTLER COUNTY UNITED WAY VISION

Butler County United Way envisions a community where all individuals and families achieve their potential through education, income stability and healthy lives.



BUTLER COUNTY UNITED WAY MISSION

Butler County United Way connects and mobilizes resources to improve lives.

UNITED WAY WORLDWIDE VISION

United Way envisions a world where all individuals and families achieve their human potential through education, financial stability and healthy lives.

Imagine a world that fosters hope and opportunity for everyone.
A world where...

- All children receive a quality education that offers a pathway to a brighter tomorrow.
- The cycle of poverty and financial dependence ends, and productive livelihoods begin for even the most disadvantaged.
- Everyone receives effective health care that improves quality of life.
- Communities not only set significant and measurable goals to advance these fundamental elements of human development, but achieve them.

BUTLER COUNTY UNITED WAY GUIDING PRINCIPALS

We will:

- Be accountable: transparently measuring results
- Be ethical
- Be fair and impartial
- Be engaged and responsive to community needs
- Be a good neighbor: partnering with stakeholders to make a difference in the community
- Be forward thinking: proactive and adaptable to community needs

UNITED WAY WORLDWIDE MISSION

To improve lives by mobilizing the caring power of communities around the world to advance the common good.

To do this we will...

- Ignite a worldwide social movement, and thereby mobilize millions to action – to give, advocate and volunteer to improve the conditions in which they live.
- Galvanize and connect all sectors of society – individuals, businesses, nonprofit organizations and governments – to create long-term social change that produces healthy, well-educated and financially-stable individuals and families.
- Raise, invest and leverage billions of funds annually in philanthropic contributions to create and support innovative programs and approaches to generate sustained impact in local communities.
- Hold ourselves accountable to this cause through our steadfast commitment to continually measure – in real terms – improvement in education, income and health.



Butler County United Way is proud to be part of a network of nearly 1,800 United Ways in more than 40 countries and territories worldwide. As the largest privately-funded nonprofit in the world, we focus on our three pillars of education, financial stability and healthy lives – the building blocks for a good life and a strong community.



It is my pleasure to present our 2015-16 Annual Report. We continued our focus on the strategic frame work to improve and strengthen our foundation for success in the future. We implemented new volunteer activities, changed the focus in regard to Resource Development, and continued to implement policies and procedures to improve financial oversight. Linda Yarger has been hired as our Director of Resource Development and Ryan Jester as our Campaign Coordinator. This team will work together to identify new paths for revenue as well as provide the appropriate level of service needed for our existing supporters.

In spite of the downward trend in revenue that has occurred over the past several years, within this report, you will find examples of our results driven by our impact agenda. Most importantly, you will be reminded that through every program, every new initiative, and every dollar raised, individual lives have been changed forever.

Our outreach to the younger generation in 2015 brought a new Student United Way chapter to Miami University's Hamilton campus. We are very proud of this organization which mirrors our operations structure, with an executive board, officers, and committees, and puts into action what has been learned in the classroom all the while having an impact on the community. We feel is important to continue to engage this sector of our population to sustain the concept of community involvement.

We were also proud to be a partner in the Hamilton Early Learning Center Collaborative. This project allows 120 children who are age 4, free tuition and free transportation to either morning or afternoon preschool classes. Providing early childhood education has been proven to have a tremendous influence on graduation rates and sets our youth up for a bright future. Bringing the right people to the table can have tremendous results and I see this as a catalyst for more of these early learning centers across Butler County.

We enhanced our volunteer efforts in 2015-16. Carolyn Coley, Chair of our Empty Bowls Initiative, brought the outreach of Empty Bowls to life in Butler County. Empty Bowls began as a grassroots effort to feed the hungry in Michigan over 25 years ago. The concept marries the arts with a passion for community service. You can learn more about Butler County Empty Bowls in the Impact Spotlight. The events from this initiative supported through our Impact Council, helped to raise over \$12,500 for food pantries and homeless shelters throughout Butler County.

Overall our volunteer hours increased from 5,400 hours to over 6,600 during the 2015-16 timeframe. Volunteer efforts will continue to be a strategic focus as these volunteer efforts not only provide valuable and meaningful services to our community, but also spread the word of our vision and mission to the community. Ultimately, seeing our work in action builds our donor base for the future so that we can have even greater impact on the communities we serve. As you can see, we continue to evolve and change as our society changes. We don't rely only on what has worked in the past; we find new solutions tailored to the challenges of our ever-changing world.

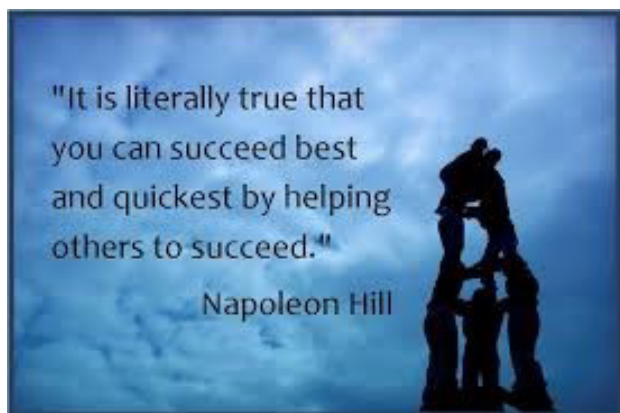
Butler County United Way goes beyond single-issue solutions and temporary fixes. Our collective impact strategy focuses on ensuring children get a strong start in school, youth earn the credentials they need to thrive in the job market, and people of all ages have an opportunity to improve their economic status and live a healthy life. By ensuring that everyone has access to these building blocks of life, we strengthen all facets of society – empowering individuals and communities through holistic solutions. Butler County United Way will continue to adapt alongside it – but no matter the time or place, people are being touched because communities are choosing to come together. That's why we are fighting harder than ever to build strong communities that allow everyone to attain their goals.

Please join with us in this vision for a brighter future for everyone.

Best regards,

A handwritten signature in cursive script, appearing to read 'Marg', in dark ink.

Margaret S. Baker
President & CEO
Butler County United Way



WHEN WE **LIVE UNITED**,
THERE'S NOTHING WE
CAN'T DO.

BUTLER COUNTY UNITED WAY STAFF

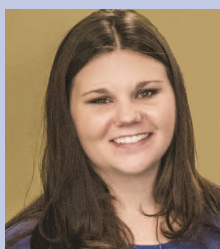
As of July 1, 2016



Margaret Baker
President and CEO



Krystal Tipton
Director of Community Impact



Cody Abraham
Project Coordinator



Jan Troutman
Director of Finance



Pam Cottle
Director of Marketing
and Communications



Ranae Wolken
Administrative Assistant



Ryan Jester
Campaign Coordinator



Linda Yarger
Director of
Resource Development

IMPACT STORY



When Carolyn Coley, wife of State Senator Bill Coley, visited Jekyll Island, Georgia on vacation, she didn't know then it would spur her life's passion.

"I visited a shop on Jekyll to learn more about weaving, which is a hobby of mine" says Carolyn. "While there, I noticed these beautiful handmade bowls and some information about an upcoming event called 'Empty Bowls'. As the shop owner explained the mission, I was overwhelmed by how simple yet effective this could be."

"I came home and found out that Oxford has been doing Empty Bowls for 12 years," said Coley. "But Butler County needed to do Empty Bowls everywhere." And from there, a passion was born.

With over 25 years since its founding, each Empty Bowls' event is based on the same vision of building awareness to fight hunger. People purchase a ticket to an Empty Bowl event and for the price of entrance, they choose a handcrafted bowl, eat a delicious soup and are able to socialize with like-minded, generous people. The money from ticket sales and silent auction items is then donated to local organizations that feed the hungry in Butler County. Handcrafted bowls are donated by many different sources. Community organizations, local schools and colleges, and independent artists are all making bowls, just to name a few. Through generous donations from Meijer and Walmart, Coley was also able to purchase a kiln for Empty Bowls so bowl making "parties" can be held as additional activities supporting the Empty Bowls' mission. That is where Butler County United Way comes in. With a focus on improving the community through education, income stability and health, we make quite an impact on our own. However, through collective efforts, the community impact can be incredible.

Butler County Empty Bowls soon became an initiative of Butler County United Way. What that means is that all financial dealings are handled through our office to ensure complete transparency of all donated funds and how they are applied. Empty Bowls aligns perfectly with our mission to connect and mobilize resources to improve lives within Butler County and

is a great way for us to support the food pantries in feeding the hungry.

Food for the events are either donated by local restaurants or homemade by Empty Bowl volunteers, such as at the Oxford event. Butler County schools support the event as well, using their artistic skills to decorate small handled bags to take bowls home in as well as placemats for the table settings. And Butler County United Way volunteers are always among those there to help with the event.

“What I love about Empty Bowls is that everything is donated so when money is collected at the event, all of the proceeds go to the community to feed hungry residents,” says Coley. “These events weave together the arts, the act of collaboration and, of course, the support of the food pantries, which ultimately benefits our county by helping people get back on their feet.”



Carolyn Coley

The Empty Bowls movement in Butler County has certainly taken hold. During 2015-16, numerous events have taken place including those in Fairfield, Monroe, Oxford, West Chester/Liberty Township and three events in Hamilton. Future plans to expand Empty Bowls into Middletown and Trenton are underway.

Being a part of a grassroots effort like this, either by handcrafting a bowl, donating your time to volunteer, or purchasing a ticket to the event, can create a lasting effect on our community. As in all things, collaboration is the key.



EDUCATION. INCOME. HEALTH.

Below is a listing of education-related programs along with a short description of each program. These programs are currently receiving funding from Butler County United Way.



The Hamilton Early Learning Center is open!

PROGRAM	PARTNER AGENCY	DESCRIPTION
Afterschool and Summer Youth Programming	Boys & Girls Club of Hamilton	Encourages positive attitude and behavior while building strong self esteem.
Backpack Program	Shared Harvest Foodbank	Provides nutrition to hungry school children over the weekend to maintain mental stamina.
Building Success	Hamilton Living Water Ministry	Provides an enrichment program and strong educational foundation for early childhood development.
Butler County Every Child Succeeds	Every Child Succeeds	This program focuses on home visitations to encourage good parenting skills for proper child development.
CASA Advocacy - A Voice for Abused Children	PARACHUTE: Butler County CASA	Provides a platform for advocates to speak on behalf of and mentor abused children.
Leadership Development	Girl Scouts of Western Ohio	Provides empowerment and leadership skills for young girls.
One-to-One Mentoring	Big Brothers Big Sisters of Butler County	Mentors are provided to at-risk youth.
Project Learn	Boys & Girls Club of West Chester/Liberty	Focuses on building a foundation for students to become life-long learners.
Project Success	Envision Partnerships	A school-based prevention program outlining the dangers of substance abuse.
School-Based Support Services	LifeSpan, Inc.	Provides academic and emotional support to those students who are at risk within the school system.
The First Tee Life Skills Experience	The First Tee of Greater Miami Valley	Provides the appropriate coaches' training in youth development in conjunction with Tee Up for Greatness.
Youth & Family Mediation	Envision Partnerships	Provides mediation to youth and families to promote healthy relationships.



Volunteers help to prepare over 600 servings of soup for Serve City.

EDUCATION. INCOME. HEALTH.

Below is a listing of income-related programs along with a short description of each program. These programs are currently receiving funding from Butler County United Way.

PROGRAM	PARTNER AGENCY	DESCRIPTION
Build Up Academy	S.E.L.F. - Supports and Encourages Low-income Families	A comprehensive construction training program that provides individuals with basic and technical skills for future employment.
Dove House	YWCA of Hamilton	Provides shelter to mentally and physically abused women.
Emergency Shelter	Hope House Rescue Mission	Provides emergency living shelter and food to adults in crisis.
Financial Stability	LifeSpan, Inc.	One-on-one counseling for individuals to stabilize their financial situation.
Food Pantry	Lighthouse Food Pantry	Provides food and basic needs to individuals and families in need.
Foodbanking	Shared Harvest Foodbank	Provides food and basic needs to food pantries across Butler County as well as families in need.
Goodman Place	YWCA of Hamilton	Provides mental health counseling and emotional support to the women of Dove House as well as other homeless women.
Hamilton Group Workcamp	S.E.L.F.	Brings over 400 high school student volunteers from across the country and over 300 local volunteers to perform home repairs.
Home Repairs & Modifications	People Working Cooperatively	Provides needed home repair and/or modification to homeowners so that they may continue to live in a safe environment.
IDA (Individual Development Account)	S.E.L.F.	Provides a blueprint to individuals who are interested in starting a small business.
JOBS NOW!	S.E.L.F.	A three-week curriculum that provides individuals with the skills necessary to obtain employment.
Supporting Success	Hamilton Living Water Ministries	A one-stop center that provides basic skills (for example, computer, job search, and translation services) to adults in need.

EDUCATION. INCOME. HEALTH.

Below is a listing of health-related programs along with a short description of each program. These programs are currently receiving funding from Butler County United Way.



Miami University Hamilton students volunteer at Sojourner Recovery Services.

PROGRAM	PARTNER AGENCY	DESCRIPTION
Butler County Rape Crisis Services	Women Helping Women	Provides counseling and emotional support to women in crisis.
Girls, Inc.	YWCA of Hamilton	Focuses on literacy, empowerment, and leadership skills for young girls.
Perinatal Services	Sojourner Recovery Services	Provides education as well as intervention to pregnant women regarding the risks and harm of substance abuse during pregnancy.
Project Independence	Wesley Community Services	Provides transportation services and other essential needs to senior citizens.
Special Olympics	Butler County Special Olympics	Encourages adults and children with developmental disabilities to engage in competitive activities.
Vision Rehabilitation Services	Cincinnati Association for the Blind & Visually Impaired	Provides health services to the blind and visually impaired.

SPECIAL COLLABORATIVE

Program: Booker T. Washington Community Center Collaboration

Partner agencies supporting this program include Great Miami Valley YMCA, Boys & Girls Club of Hamilton, The Fitton Center for Creative Arts, Miami University Hamilton, S.E.L.F., and YWCA of Hamilton.

Supports their multiple programs focusing on education, income stability and healthy lives, the building blocks for a good life.



Student United Way presents Booker T. Washington with money raised for their baseball league.



2015-16 Campaign Cabinet



Cincinnati Association for the Blind and Visually Impaired enjoy lunch at the Annual Meeting.



Lee Geiger,
Campaign Cabinet Chairman



Christine Birhanzi, W. Otis Briggs, Jr.
Outstanding Volunteer of the Year,
with Mag Baker.

CAMPAIGN CABINET

Lee Geiger, Chair
Graydon Head

Sonja Kranbuhl
Fort Hamilton Hospital

Laurie Santel
Stay Play Made Simple

Margaret Baker
Butler County United Way

Jason Krause
Fairfield City Schools

Joshua Smith
City of Hamilton

Christine Birhanzi
Sojourner Recovery, Inc

Richard Lux
US Bank

Bill Staler
LifeSpan Inc

Juan Cortes
Community First Solutions

Karen Mantia
Lakota School District

John Venturella
Clark Schaefer Hackett

Jane Gegner
Hillandale

Doug Manwaring
Liberty Mutual Insurance

Chip Washienko
West Chester Hospital

Anita Glasmeier
Liberty Mutual Insurance

Bill Miller
Butler Tech

John Wilhelm
Hamilton City Schools

Linda Glass
First Financial Bank

Lynda O'Connor
Lakota School Board

Mitchell Willis
Butler County United Way

Patrick Hinker
Clark Schaefer Hackett

Randy Oppenheimer
Lakota School District

Nick Ziepfel
Graydon Head

Tim Kemper
Park National Bank

Tina Osso
Shared Harvest Foodbank



Butler County United Way

COMMITTEES AND COUNCILS

FINANCE COMMITTEE

Purpose: The Finance Committee advises the President/CEO and Director of Finance about financial matters such as the budget and investments.

Michael Bain, Chair **William Hartford**
Mowry, Marty & Bain, LLC US Bank (Retired)

Peter Abner **Steve Lippert**
Kirsch CPA Group, LLC Hamilton Caster & Manufacturing Company

Bryan Boynton **Gregory Schmidt**
Stephenson & Warner, Inc. Ohio Casualty (Retired)

Mary Pat Essman **Ronald Smith**
Lane Public Library Onepoint
(Retired)

Daniel Griesinger
US Bank

WOMEN UNITED

Purpose: The mission of Women United is to strengthen our community and change lives in Butler County through collaborative efforts of women leaders who invest in Butler County United Way. This dynamic group of community leaders gives their time, talent and measurable impact on women and children in Butler County.

Joni Angel **Cathy Harbison**
Paycor Baysore’s Flower Shop

Ann Berg **Jessica Hill**
First Financial Bank Stites & Harbison, PLLC
(Retired)

Kathy Carmack **Kathy Rambo**
First Financial Bank West Chester Chamber
(Retired) Alliance

GOVERNANCE & NOMINATING COMMITTEE

Purpose: The Governance and Nominating Committee monitors the operations of the Board of Trustees as well as identifies potential new Board members.

Catherine Evans, Chair **Vaden Fitton**
Millikin & Fitton Law Firm Great Miami Valley YMCA

Peter Abner **Karen Mueller**
Kirsch CPA Group, LLC Horan Associates, LLC

Tom Daskalakis **Lawrence Mulligan**
UC Health - West Chester First Financial Bank
Hospital

INTERN

Logan Brown



IMPACT COUNCIL

Purpose: To actively participate and guide Butler County United Way's efforts to identify the community's needs in the areas of self-sufficiency, preparing children/youth to succeed in school and life, and helping individuals to live healthy lives. The Impact Council will collect and report on data, which allows them to aggregate the results and report to the community how Butler County United Way supported programs and services are performing as a whole.

Lonnie Tucker, Chair
Lakota Community Council

Michael Albrecht
Fairfield City Schools District Office

Victoria Ames
Cincinnati Childrens Hospital

Angie Brown
BIYTC Life Coaching

Tanya Coffey
Butler County Board of Developmental Disabilities

Carolyn Coley
Butler County Empty Bowls Initiative

Maria Espinola
University of Cincinnati - College of Medicine

Chrystal Green
Parent Volunteer

Kim McKinney
Community Volunteer

Keith Millard
Hamilton City Schools

Teresa Nau
Talbert House

Samina Sohail
West Side Adult and Pediatric Care

Michael Walsh
Community Volunteer

Heather Wells
Butler County Educational Service Center

ACTION COUNCILS

Purpose: To identify and support strategies and solutions that move us toward a desired vision for our community as charged by the Butler County United Way Impact Council. Each action council focuses on research, the experiences of other communities, best practices, and other tolls to identify "what works" in addressing the root causes of the issue identified by the Impact Council.

EDUCATION ACTION COUNCIL

Chris Klefeker, Chair
Miami University Hamilton

Brian Chamberlain
Deloitte & Touche, LLP

Rolanda Flowers
Richard T. Allen Academy

Deb Lawrence
Employers Health

Lonnie Tucker
Lakota Community Council

Heather Wells
Butler County Educational Service Center

Brandon Chung
Richard T. Allen Academy

HEALTH ACTION COUNCIL

Victoria Ames
Cincinnati Childrens Hospital

Maria Espinola
University of Cincinnati - College of Medicine

Kim McKinney
Community Volunteer

Samina Sohail
Westside Adult & Pediatric

Michael Walsh
National Accreditation Council for Blind and Low Vision Services

FINANCIAL STABILITY COUNCIL

Tanya Coffey
Butler County Board of Developmental Disabilities

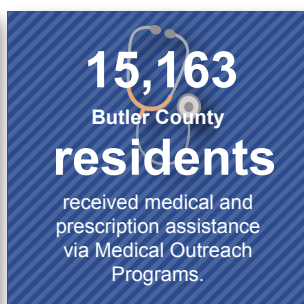
Dena Huentelman
General Electric (Retired)

Teri Nau
Talbert House

Jason Newport
First Financial Bank

Shelly Wallpe
Butler County Educational Service Center

How's this for a happy ending?



TOP CAMPAIGNS FOR 2015 - 2016

Barnes Aerospace
Butler County Government Offices
City of Fairfield
Duke Energy Fairfield
First Financial Bank
General Electric Evendale
Employee Community Services Fund
Hamilton Caster & Manufacturing Company
Johnson & Johnson
Kao USA Inc.
Lakota Local Schools
Liberty Mutual Insurance
Macy & Co., Inc.
Meijer, Inc.
Mercy Health
Rockwell Automation - West Chester
Shepherd Color Company
The Cincinnati Insurance Companies
The Procter & Gamble Company
Totes/Isotoner Corporation
TriHealth, Inc.
United Performance Metals
UPS, Inc.
US Bank
Vantiv
UC Health - West Chester Hospital
Western States Machine Company

PACESETTER CAMPAIGNS

Boys & Girls Club of Hamilton, Inc.*
Boys & Girls Club of West Chester/Liberty Township*
Butler County Government Offices
Butler County United Way*
Catholic Charities of Southwest Ohio
City of Hamilton
Envision Partnerships*
Great Miami Valley YMCA
Lifespan, Inc.
Meijer, Inc.
Mother Teresa Catholic Elementary School
PARACHUTE: Butler County CASA*
S.E.L.F.
Shared Harvest Foodbank*
Shepherd Color Company
Sojourner Recovery Services
Target Stores
West Chester Township Administration
Women Helping Women*
YWCA of Hamilton

*Denotes 100% Employee Participation

VOLUNTEER HOURS

Total Volunteer Hours	6,619
Board of Trustees	353
Campaign Volunteers	810
Community Impact Volunteers	1,535
Day of Caring Volunteers	3,357
Women United	452
Office/Intern Volunteers	112

VOLUNTEER AWARDS



Bill Staler, Michelle Seither, Mag Baker

AGENCY LEADERSHIP AWARD

Michelle Seither

This award symbolizes teamwork, collaboration with United Way and social service system advocacy.

Michelle Seither received the Agency Leadership Award for the important impact she and her group are making in the West Chester/Liberty Township areas. She has a strong and faithful commitment to the youth of Butler County.

JR. VOLUNTEER OF THE YEAR AWARD

Ryan Jester

This award goes to a youth volunteer who has devoted significant time and energy to forwarding the mission and vision of the Butler County United Way and represents youth with an active, articulate and insightful voice.

Ryan Jester was chosen for this award for his very active campaign efforts, especially on the Miami University Hamilton campus. He also spearheaded the organization of a Student United Way chapter, the only such chapter in Ohio.



Ryan Jester, Cody Abraham, Mag Baker



Sarah Barnett, Mag Baker

OUTSTANDING COMMUNITY PARTNERSHIP AWARD

Butler County Education Service Center

Awarded to a collaborative partner that enabled Butler County United Way to forward its mission in the most expedient and efficient manner.

As a major employer in the West Chester area, UC Health-West Chester Hospital gives back to the community through employee contributions as well as volunteer opportunities.

LIVE UNITED AWARD

Totes/Isotoner

Awarded to Totes/Isotoner as a company that represents the concept of LIVE UNITED throughout the entire country. This company finds ways to be involved in many aspects of our mission and vision by participating in many Days of Caring projects as well as the community campaign at several of their plants across the country.



Mackenzie Armour, Mag Baker



Tina Osso, Mag Baker, Amy Waldbillig

PRESIDENT'S AWARD

Amy Waldbillig

This award goes to an active community member who volunteers with the Butler County United Way in multiple capacities. This volunteer supports and significantly augments the work of our professional staff.

Since 1999, Amy Waldbillig has served in various capacities including Campaign Cabinet Chair, Board of Trustees, as well as numerous sub committees and is always willing to collaborate on projects that will benefit the community.

W. OTIS BRIGGS, JR. OUTSTANDING VOLUNTEER OF THE YEAR AWARD

Christine Birhanzi

Named in honor of W. Otis Briggs, Jr., former executive director of Butler County United Way from 1943-1976, this award was presented to Christine Birhanzi, who worked tirelessly as a member of our Campaign Cabinet. She acted as a member of the partner agency leadership group and is always willing to take on additional responsibilities when asked.



Christine Birhanzi, Mag Baker



Student United Way

@ Miami University



Under the guidance of Butler County United Way, a Student United Way chapter was organized during 2015 on the campus of Miami University Hamilton. Student United Way is a movement of passionate student leaders committed to improving lives and strengthening communities. The organization represents the only Student United Way in the state of Ohio and is one of just 80 Student United Way organizations worldwide.

Hamilton Early Learning Center Collaborative

Following months of open and honest dialogue, Butler County United Way, along with Butler County Educational Service Center, Hamilton City Schools, Hamilton Community Foundation, Hamilton CORE Fund, and the Presbyterian Church of Hamilton collaborated to create the Hamilton Early Learning Center.

This type of initiative aligns perfectly with Butler County United Way's vision to help individuals and families achieve their potential through education, income stability and healthy lives and will allow over 100 four-year-old children to have a better chance to succeed in kindergarten.



Days of Caring



Miami University Students spend a portion of their Spring Break learning about Social Service programming.

Days of Caring are wonderful opportunities for companies and community members to get a chance to volunteer in their communities. Giving back and being a part of the change is how to LIVE UNITED.

Butler County United Way is grateful to our volunteers and to the following companies that participated:

Booker T. Washington Community Center

Boys & Girls Club West Chester/Liberty

Butler County Educational Service Center

Butler County Board of Elections

Fitton Center for Creative Arts

Fort Hamilton Hospital

Miami University Hamilton Campus

Michael A. Folkes Company

Sojourner Recovery Services



Miami University students prepared care baskets for new born babies and their mothers at Sojourner Recovery Services.



600 servings of soup prepared at Fitton Center for Creative Arts by community volunteers were provided to Serve City.

GIVING

ALEXIS DE TOCQUEVILLE SOCIETY

The Tocqueville Society derives its name from Alexis de Tocqueville, a French aristocrat of the 19th century who was inspired by the American spirit of philanthropy. His observations formed the basis of 'Democracy in America', a detailed study of American society and politics, published in two volumes in 1835 and 1840.

Tocqueville wrote extensively on the power of voluntary giving for the common good. Butler County United Way's Society recognizes our community's largest philanthropic leaders. The support of these leadership givers is a key component in powering our work to create innovative solutions that get to the core of the most pressing issues in our community.

If you have any questions about the Society, please feel free to contact Linda Yarger at 513.785.2341 or visit our website at bc-unitedway.org.

GOLD CIRCLE \$5,000-\$7,499

Andrew Brossart
James A. Cleary
Neil & Honi Cohen
Arthur Joseph Koehler
Anonymous
Douglas B. Manwaring
David S. Meyer
Steven W. Miller
Karen L. Mueller
Sandra L. Murawski
Tom and Nancy Urban

SILVER CIRCLE \$2,500-\$4,999

Jim & Margaret Baker
Thomas Lawrence Brehm
David Ernest Burgio
Ramona Cheek
Ellen Colyer
Michael V. Curran
Anonymous
Michael Fox
Larry R. Genskow
Bill and Jackie Groth
Shawn Hamilton
Sheryl Helsinger
Tom Kennard
Eileen C. King PhD
Richard T. La Jeunesse
Kirk W. Lake
Jeffrey Liesch

Janet S. Littig
John T. Marten
John F. McKibben
Tina Osso
Lee and Jackie Parrish
Bruce R. Quisno
Mark R. Richards
Jeffrey R. Risk
Connie Roetker
Timothy C. Roetker
Diane Schoch
Judi L. Sobecki
Amy Summerville
Michael Thomas
Annette Tiesmann
Robert Volkman
Thomas L. Zenge

BRONZE CIRCLE \$1,000-\$2,499

Tim Abbott
 Peter Abner
 Dawn M. Alcorn
 Andrew Allcock
 Michael B. Andrews
 Louis Armstead
 Peter G. Ayers
 David Gerard Babbitt
 Beth M. Bachmann
 Ruth Elizabeth Bailey
 Doug Baker
 Kimberly A. Baltrusch
 Angel Bardeche
 Steven L. Barnholtz
 David Baumgartner
 Joe and Susan Belew
 Donald G. and Wendy Bennett
 Ann Berg
 Catherine & Joe Bidleman
 Ann M. Bowling
 Cheryl A. Brackman
 Scott M. Briggs
 Brent Bumgarner
 Javier Cano
 Kathy D. Carmack
 Michael C. Carman
 Charles L. Carrier
 Pat Carruthers
 Charles F. Chalupa
 John & Sharon Clemmons
 Timothy Joseph Cook
 Debra A. Cook
 Pamela Rae Cottle
 Carey N. Curtis
 Kara Czanik
 James R. Danbury
 John M. Debbeler
 Daniel J. Debrosse
 Rick K. Demmel
 Theresa M. Derickson
 Timothy A. Dickens
 Steven L. Diersing
 Charles M. Dragoo
 Laura Ann Elenich
 Timothy S. Elliott
 Michael Epstein
 Mary Pat Essman
 John W. Fickle
 Joan M. Fisher
 Dianne & Woody Fitton
 Jamesina A. Fitzgerald
 David Joseph Flavin
 Robert and Mary Fogler
 Frank P. Gardner
 Lee Geiger
 Leo A. Geiser, Jr.
 Chris H. Gist
 William J. Gore
 Howard Green
 Kathy Therese Gubser
 Fuad Hajjar
 Meghan T. Hamilton
 Lynn Hanck
 Theresa A. Hanlon
 Christine Hardwick
 Stanton E. Harper
 Dr. Edward B. Herzog
 James and Anna Heyser
 Amoury T. Hollins

Robert Holweger
 Lawrence M. Johnstal
 Joseph F. Jones
 Laura L. Kaiser
 Kimberly K. Kammerdiener
 Matthew J. Keleshian
 John Wayne Kennedy
 Irvin D. Kieback
 Carl G. Kindberg
 Dawn R. Knapek
 Carol Millard Kosarko
 Dale O. Kozma
 Phillip Krekel
 Shaun Lammert
 Debra Lawrence
 Peter Y. Lin
 Anonymous
 Jim Lippert
 Melissa K. Lowe
 Richard A. Lux
 Shawn L. Mansfield
 Joseph L. & Sarah S. Marcum
 Steve Marcum
 Ricky F. Mathews
 Stephanie L. Matthews
 Shawn Patrick McCabe
 Gary L. McMahan
 Matthew G. McNally
 Penny S. McVay
 Tracey Marie McVey
 Dr. Christopher J. Meier
 Mark Mercer
 Carla R. Messer
 Steve & Gail Milillo
 Kenneth W. Miller
 Stephen A. Moese
 Larry G. Morgan
 Suzanne Morgan
 Thomas Morris
 Pamela S. Mortensen
 Judge John and Shirley Moser
 Dick and Barbara Munson
 Joseph B. Nemeth
 John Niehaus
 Rebecca A. Noel
 Linda Novitski
 Robert A. O'Brien
 Sarah R. Ormbrek
 Marie D. Palladino
 Anonymous
 Phyllis P. Philley
 Ed Pokora
 Douglas C. Pressler
 Jason Michael Price
 Richard Reid
 Connie Retherford
 David E. Robinson
 Dr. Richard Roebuck M.D.
 Melissa A. Ruffner
 Steve Ruggiero
 Mary Russell
 Chris Ryan
 Thomas M. Ryan
 Gerald Sasser
 Harold & Sharon Saylor
 Michael and Nora Schablein
 Robert Schick
 Joel and Marilyn Schmidt

Paul William Schneider
 Virginia Segbers
 Jim & Tammy Sell
 Anonymous
 Karen A. Shadowens
 Peter K. Shires
 Robert E. Singer
 Robert E. Sinnard
 Jennifer Skinner
 Anonymous
 Joshua A. Smith
 Anonymous
 Anonymous
 Logan and Donna Stone
 Michel L. Sussman
 Leo E. Taske
 Barbara Thielen
 Kevin and Roberta Thomas
 Brian R. Thomas
 Krystal and Timothy Tipton
 Daman E. Turner
 William Ubbes
 Greg Valandingham
 Bennette C. Veals
 Amy and Carl Waldbillig
 Mary Walston
 Kelda Weber MS CPCU
 Robert L. Weigel
 Nancy Wenning
 Howard Wetzler
 Susan M. White
 Theodore F. Wilke
 Jon Yslas & Mitchell Willis
 Carolyn B. Winslow
 Jeannette Wirsch
 Stephen J. Wolterman
 David A. Yeager
 David Zeek



BENEFACTOR \$999 - \$500

Greg D. Adams
Tami Adams
Ken Adams
Mike Adkins
Leah E. Aguilar
Gilbert Aguilar
Alexander S. Albacarys
Thomas L. Alford
Jeff Allen
James L. Allison
Cynthia L. Amyx
Angelica Maria Anderson
Amy Andrews
Dr. Michael J. Armentrout M.D.
Susan Arnold
Amal H. Assa'Ad MD
Janet Ausdenmoore
Natasha A. Back-Whitehill
Dorothy L. Bailey
Kent P. Baker
Mary O. Bausano
Kimberly Bayliss
Michael Beauchat
Kim A. Beckman
Paul Matt Beiser
Susan L. Beitzel
David L. Belew
Gregory D. Bishop
Jacqueline K. Bishop
Jennifer Bittner
Linda S. Bolton
Georgine Bowman
James Boyle
Valerie A. Brabbs
Paul M. Brannon
Mary-Jo F. Brigante-Murphy
Erin Brite
Kevin Brooks
Roger A. Brown
James Brueshaber
Matthew B. Burgess
Christ A. Burtis
David Butsch
Rogers L. Calvin
Celia Cano Ramon
Donna Gayle Carter
Michael Carter
Curtis Castillo
Paul Kenneth Cauthen
Roger A. Chamberlain
Niyati Chanchani
Anita May Chard
Carol S. Cheek

Tim L. Chupka
Scott R. Clark
Vernon Click
Janet E. Clifford Brown
Dr. Martin A. Cohen
Daniel B. Coles
Malta Mae Collins
Katherine J. Collins
Amy S. Combs
James K. Comer Jr.
Pamela Cooper
Nina Cornwell
Sarah P. Cory
Bryan Jaco Couch
Honorable Matthew J. Crehan
Mary C. Damewood
Angella Christine Daniels
Jacqueline A. Daniels
Tom Gus Daskalakis
Andrea Marie Davidson
Stephanie De Garay
Lana M. DeLong
Charles A. Depriest
Donna Deye
Michael J. Dickey
Ryan A. Diersing
Richard H. Drake
Phillip Eaton
Christina Edds
Richard Wayne Emery
Kathleen Esquerra
Cathi & Jay Evans
Warren Farrar
Scott Fasse
Timothy J. Felts
Matthew J. Fette
James K. & Susan A. Fitton
Christopher D. Flaig
Shannon R. Foos
Connie L. Frazier
Angela Fugate
Vickie V. Gabbard
Caroline Gaffigan
Derek Garrett
John M. Gavigan
Pamela Gentile
Bradley E. Gerth
Kevin Getz
Gerry Gibson
Anita C. Glasmeier
Gregory D. Graham
Andrew D. Greene
Dana P. Gruenbacher

Bruce Guiler
Joel Gunnarson
Roger A. Haire
Joan E. Hall
Tom Hall
Guy D. Hampton
Doug & Erin Hancher
Jane Hansley
Michael Hawkins
Jeffrey C. Hayes
Ann Headley
William Hess
Mary Hess
Ann O. Hildenbrand
Richard Hill
Constance Holt
Willard E. Hopkins
Steven Horwatt
Rebecca K. Hoskins
William C. Hudson II
Michele M. Huff
Jamie L. Hunter
Vanessa J. Hurley
Jolynn Hurwitz
Connie M. Hutjens
Eric Hysong
Jill A. Inkrott-Smith
Andrea A. Isch
Robert Jackson
Craig Jacobsen
Shannon N. Janulis
Susan L. Joa
Martin and Kelli Johnson
Robert Charles Jung Jr.
William C. Keck
Helen R. Kemp
Darren Franklin King
Jill Suzanne Korolenko
Erin M. Kutchera
Lawrence H. Laake
Angela R. Lampe
Barry Lampley
Jeff Lane
Art Lantman
Heidi J. Latsko
James Lefevre
Bob Lell
Olivia J. Lewis
Brian Lien
Janet Littig
Nicole L. Lloyd
Yvette Marie Lomax
James R. Lovell

BENEFACTOR \$999 - \$500

Ian MacKenzie-Thurley
Lisa Martinez
Michael Martir
Michael James Mauntel
Douglas S. Mays
Stephan A. McAbee
David A. McCamey
Kathy McIntosh
Jon Kevin McLaughlin
Deanna L. Medley
Kevin Alan Meyer
Bruce D. Miller
Karen Miller
Jarred Minter
Ray Albert Miranda
Ronald Moeller
Patricia L. Moore
William C. Morrison
Larry Mulligan
Randall Myers
William M. Nartker
Paul C. New
Anthony T. Nguyen
Andrea L. Noland
James R. Noll
Diane J. Noonan
Alisa B. Norcom
John Nutter
Dwight Packard
Dr. Albert S. Palatchi M.D.
Cynthia V. Parrish
Antionette P. Parrish-Blackwell
Michael & Donna Partridge
Russell Allen Perry
Ragini S. Peters
Kevin Pierce
Pailin Pitaniello
Jared Pratt
Dr. Michael G. Pratt
Suzanne R. Prescott
Daniel Pucke
Shawn D. Quinlisk
Shirley A. Radomski
Amanda J. Reiboldt
Douglas Rhodus
Nayila Richardson
Ron Rohlfing
Rachel A. Rose-Mansfield
John G. & Shirley A. Rosmarin
Benita Ross
Susan Russell
Robert R. Saelinger
Thomas Schlau

Gregory J. Schmidt
Edward J. Schmitt
Steve S. Schnabl
David Schweitzer
Paul J. Settle
William E. Sicking
Mark Simonovich
Gregory Skinner
Mark D. Snyder
Dr. Samina Sohail
Michael H. Solon
Dr. Wendy Soto
Joel Southard
Jerald A. Sprouse
Terri M. Sroufe
Bill Staler
Michele Ellen Stokes
Michael Allen Strahan
Robert J. Strife
Dr. Susan J. Sweda
Lori Thesken
Scott M. Thomas
Hugh Thompson
Jeffrey Thurman
Linda S. Todd
John D. Trebbien
Heidi Trinka
Art V. Tucker, Jr.
Angela K. Turner
Richard Vanatsky
Stephen Vandegriff
Margaret M. Vazquez-Ramos
Chris A. Vennemeyer
Pamela A. Volz
Mary Beth Wagner
Robin Wallace
Shelly & David Wallpe
Daniel R. Warncke
Chip Washienko
Steve Wentzel
Charles E. Werner
Robert W. Wetterer
Karen & John A. Whalen
Carla White
Donald L. Wilke
John P. Williams
Larry C. Williams
David C. Yates
Charles S. Young
Luke A. Zannoni
Joan Zellner
Dr. Richard L. Zettler M.D.
Beth A. Zimmerman

FRIEND \$250 - \$499

Kathleen M. Abbott
Bradley Abner
Tina M. Abner
Michael B. Adams
Carol Albright-Thomas
Angie D. Allison
Donna Maria Alton Morgan
Luis Amaya
Harold E. Angus
Gilbert Anokye
John Apple
Lauren Austin
Daniel L. Baber
Timothy Bachman
Deborah Bailey
Michael W. Bain Jr.
Michael A. Baker
John Bakhit
Christy Ballard
Margaret S. Bange
Cindy Bathalter
Delia R. Bearup
George & Irene Beckett
Christopher Wade Beier
William Bennison
Tina Marie Bernard
Timothy Bertsch
Brian Bick
Robert Harold Bimonte
Jamie Binegar
Michael Binegar
Christine A. Birhanzi
Deana Birkenheuer
Dolloff F. Bishop III
Jena Bittner
Sherrie M. Bluester
Casandra R. Bonacini
Mark Bonert
Eric E. Booker
Jeff Borke
Gary M. Bramble
Judy Brandell
Gregory B. Braswell
Darlene Breedlove
Joanne Breehne
Thomas A. Breitenbach
Alison W. Bridge
Sheryl Bringman
Travis Jarrard Brock
Breanna Brock
Neil A. Brooks
Robyn L. Brouillette
Gregory Brown
Peter J. Brown
Karen S. Brown
Laura Brown

Pamela Brown
Norman Scott Broyles
Jennifer Ann Brueshaber
Honorable Henry J. Bruewer
John T. Bruewer
Jocelyn Bucaro
Judith G. Buchanan
Lucinda K. Buckey
Michelle Marie Burgio
Robert L. Burtis
Brad Butler
Jeannie Carol Butler
Mary Jo Butler Fingerhut
Willie Cain
Hilary Campbell
Doyle Carpenter
Chelsea Carpenter
Pumma Carvalho
Rhonda Lynn Cassano
Michael T. Casterlow
Marcie Caudill
Nathaniel T. Chadrick
Jennifer R. Chaltain
Christopher Chapman
Susan Hart Chapman
Vanessa K. Chapman
Georgianna Charlton
Nancy R. Chestnut
James S. Christman
Scott Christman
Dawn Clark
Theresa J. Clayton
Ryan P. Cogan
Steven S. Cole
Dr. Charles W. Collins
James Collins
Christopher M. Connell
Robert C. Coogan
Cathy Cooney
Scotty Cooper
Rhonda L. Cordes
Brian E. Cornell
Juan C. Cortes
Susan J. Costantino
Alexander David Counts
Cindy L. Cox
Dan N. Crank
Bruce Crosby
James M. Croxton
Matthew Cutter
Sarah Daasch
Amy Davenport
Josh M. David
Cameron Davis
Betsy Davis
Casandra D. Davis
Cathy A. Davis

Jane A. Davis
Sheryl Davis
Jason Dawson
Steve Deitzer
Angela J. Deutsch
Dr. Rick D. Devine
Edward F. Devine
Julie A. Dichtl
Jeffrey Diver
Melissa Doerr
Denise L. Donisi
Chad Donner
Jenna Downey
Timothy Dozier
Barton J. Drake
Bruce Dunham
Anthony Dunn
Susan W. Duplain
Thomas G. Dziech
Matthew Ellis
Gina Ellis
Patrick Engels
Yvette M. Ertle
Teresa Evans
Denise Evers
Troy Fair
Stacey A. Fedasz
Michael D. Fehr
Brienne Fey
Joel Fink
Robert J. Fischer
Patricia Fisher
Nancy B. Follmer
Elizabeth E. Fontaine
Joseph Ford
Holly M. Foster
Sarah M. Fowler
Robert Frayer
Becky A. Frayer
Maureen F. Fritsch
Carrie Marie Furnish
Robert M. Gallaher
Susan Garrett
Pamela J. Gattermeyer
Chris S. Gee
Scott Gehring
Carol P. Gentile
Halle Gerboc
William L. Gerhardt
Ken D. Gerold
Ashley N. Gierzak
Janet Gillen
John Gillingham
Ross Golden
Edward Goldman
Elizabeth Gorrell
Jon T. Graft

FRIEND \$250 - \$499

Jonathan Granville
Sandi Gray
Erica M. Grayson
Douglas A. Greene
Laura S. Gregory
Lionel Griffin
Pete Grimes
Paul Grone
Donald Gross
Thomas F. Grosskoph
Douglas A. Gruver
Daniel Grzeskowiak
Sarah Haines
Margot Halcomb
Timothy Halloran
Heath Hallstedt
Alicia Hamblin
Karen Hannah
Charles Hansel
Maureen B. Harkins
Jennifer Harrell
Kelly Harrison
Randy L. Hassler
Jay T. Haworth
Elizabeth A. Hayden
Steven K. Hedges
Lynn H. Helhoffer
Ronald Helton
Donald J. Henkel
Cheryl A. Hershner
Daniel C. Heyd
Billie J. Hicks
Michael Hingsbergen
Heather K. Hodges
Lori S. Hogan
Mary I. Hopton
Karen A. Horrall
Steven B. Hose
Adam J. Hubbs
Vernon H. Huber CPA
John R. Hughes
Amy C. Hughes
Diana L. Hughes
Robert W. Humbarger Iii.
Jason J. Hunold
Randy Hunt
Melanie M. Huron
Elaine M. Iram
Terry Jacobs
Brian James
Barry T. Jamison
Justin Jefferson
Tricia Jelinek
Leslie Jewett
Francine Johnson
Tara Johnson
Wendy C. Johnson

Renee M. Johnson
Maureen E. Jolley
Karen L. Jones
Sarah Jones
Joyce Kachelries
Daniel Karwisch
Kenneth M. Keim
Thomas Keller
Richard L. Kiefer
Jack Kirsch
Debbie L. Klare
Ronald D. Klayer
Kathleen L. Klink
Milisa G. Klusman
Michael W. Koehler
Roxanna J. Koelblin
Paula L. Kottmann
Dr. William R. Krall M.D.
Tiffany L. Krall
Ryan Kramb
Leta K. Kranbuhl
Sonja C. Kranbuhl
Shannon M. Kuhl
Marcia L. Lane
Deborah J. Lanter
Billy V. Lary
Kelley Lawrence
Doug Lawson
Justin Lawwill
Elizabeth E. Leenellett
Stewart C. Leonard
Michael A. Lewis
Jason W. Leyda
Roland Lima
Melissa M. Lima
Robert Lineback
James E. Lipnickey
Mary A. Lorenz
Julie Lovelace
Linda D. Lovelace
Robert Michael Lowe
Richard A. Lucal
Lois A. Lucius
Jennifer S. Lukes
Michelle R. Lund
Michael Lynch
Richard N. Lynch
Jennifer P. Lynch
Jennifer Lee Mader
David M. Maggard
Amanda D. Mahoney
Samuel M. Mamula
Linda S. Marchbanks
Jon Markle
Bryant P. Marshall
James L. Marshall
Georgia Marshall

Sharon K. Marshall
Matthew T. Masarik
Consuelo Mason
Richard L. Mathews
Frances D. Matre
Carol A. Mayhall
Mary V. Mays
Anita Mayworth
James McCall
Nancy McCann
Jessica McComb
Rebecca D. McCowan
Renee McGowan
Amber McKeever
Michael P. McNamara
Darryl Menning
Kenneth E. Merk
Teresa Merk RN
David J. Meyer
Donald E. Meyer
Leonard Milawski Jr.
Dawn C. Miller
John H. Mitchell
James Mitchiner
Haruko Mizoguchi
Jill M. Montgomery
Jennifer R. Muench McElfresh
Tonia R. Muhammad
Sheryl A. Mumfrey
Jeri Rae Murnahan Bridges
Tom Natale
Kevin Naylor
Gary D. Nelson
Nathan Nickell
Kevin Nilsson
Roderick E. Nimtz
Nancy Elizabeth Nix
James O'Connor
Melissa A. Oldfield
Samantha Orleck
Michael A. Oster Jr.
Jamie Palmer
Melissa S. Park
Gerald L. Pater
Jennifer P. Patsy
Eric Paulsen
Suzanne Paulus
Jeremy Pearson
Rebecca Peery
James A. Peitsmeyer
Kathleen L. Pendergrass
Tim Penton
Terry L. Perdue
Connie S. Peteronjes
Jeffrey Pfaff
Kim Phillips
Tonya J. Phillips

FRIEND \$250 - \$499

Dustin Philpot
David W. Plotts
Rita Pochard
William Podborny
Gennifer L. Porter
Linda Poulemanos
Wes Price
Susan J. Price
Linda Purdy
Troy Quedens
Michele Quimby
Ryan Rager
Gary R. Ramsey
Joseph Ramsey
Clinton E. Randolph
Scott D. Rasmus
Patricia Rehe
Dr. R. Curtis Reppart
Grace Reynolds
Alfred H. Rice
Pamela Sue Riley
John M. Ristau
Eileen K. Roberts
Tricia L. Roberts
Joseph E. Robillard
Judith A. Roesch
Karla Ronneberg
Marlene Rork
Brian R. Rose
Jon Rossiter
Craig A. Roten
Mary J. Royer
Jeffrey B. Rubenstein
Brenda Runck
Mary Runnebaum
Robert H. Rusbosin
Tamra J. Rustin
Robert Rutherford
Adam Sackenheim
Steve Sackenheim
Richard A. Sadri
Karen Said
Richard G. Santoro
Danita Sauerwein
Lana J. Saunders-Pagel
Amanda Schaeffer
Gail E. Scherff
Heidi Schiller
Donna S. Schneider
Daniel J. Schnell
Helen M. Schultheiss
Jeffrey A. Schultz
Andrew Schuster
Katherine E. Schwartz
Joseph S. Scrimizzi
Anthony M. Seifert
Marc Seifert

Michelle Seither
Bart Shanks
John Sheehan
Renee Shell
Chris Shimkowiak
Kristin S. Shrimplin
Michele F. Shurin
Kristi Shuter
Annette R. Siegler
Aurelia C. Simmons
Linda Marie Sivik
Scott Skelton
Kimberly Skelton
Rabbi Eric R. Slaton
Vickie Sluss
David Smith
Matthew L. Smith
Andrea K. Smith
Denise M. Smith
Lori Dawn Smith
Steven Smolik
Laura Snyder
Robert A. Soehner
Jessica H. Soellner deBray
Terry W. Spivey
Brenda S. Stafford
Karen Staley
Robert E. Staton
Susan Steele
Katherine A. Stengel
Thomas Stewart
Tonya S. Stewart
Dr. Glenn W. Stitsinger D.D.S.
Justine Renee Stitt
Kimberly D. Stonum
David Stuckman
Rusty Sullivan
Lori A. Sullivan
Ward Patrick Sutton
Joan Szewczyk
Scott Tabar
Jean Tao
Gladys Diane Taylor I
John Temperato
Karen M. Terry
Venita R. Thomas
Eric J. Thyen
John Tilton
John Timme
Marvin C. Torres
Cindy Trauthwein
Jan & Howard Troutman
Robin M. Troy
Anthony Tucci
Aruna Vadlamani
Susan E. Vance
Angelica M. Vanzant
David Velasquez

Matt Vietor
Thomas Wagner
Regina A. Wallace
Tonya L. Walls
Yu Wang
Thomas Wargo
Todd Warnock
Penelope Warrell-King
Christopher Q. Weber
Debra Weber
Richard Weinman
Daniel Wells
Mark Wendling
Timothy G. Werdmann
Karen West
Allison W. Whalen
Chiquita Veronica White
Kathleen Ann Wiegand
William Wilder
John M. Wilhelm
Michael L. Williams
Joseph Willis
Joanne R. Willman
Carl Wilson
James M. Wissel
Gina Witko
Karen Denise Wittmer
David M. Woods
Amy B. Wylie
Cari Wynne
Gary W. Yates
Todd M. Yeagle
Jane Yelm
Gregory M. Young
Jeffrey Young
Russ L. Young
Karen L. Young

BUTLER COUNTY UNITED WAY SPONSORSHIPS 2015 - 2016

2016 Community Campaign Kickoff

GRAYDON HEAD

Zombie Run



Art ^{on} % off
Symmes

CSL Plasma
Good for You. Great for Life.



Annual Meeting and Volunteer Recognition



BOARD OF TRUSTEES



Karen Mueller
Chairperson
Horan Associates, Inc.



Doug Manwaring
Vice Chairperson
Liberty Mutual
Insurance



Catherine Evans
Secretary
Millikin & Fitton Law
Firm



Mike Bain
Treasurer
Mowry, Marty & Bain,
Inc.



Margaret Baker
President/CEO
Butler County United
Way



Pete Abner
Kirsch CPA Group, LLC



John Clemmons
City of Fairfield



Tom Daskalakis
UC Health – West
Chester Hospital



Vaden Fitton
Great Miami Valley
YMCA



Connie Frazier
American Solutions for
Business



Lee Geiger
Graydon Head,
Butler/Warren



Shawn Hamilton
Proctor & Gamble



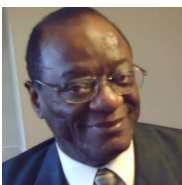
Elaine Hemmelgarn
Mercy Health



Larry Mulligan
First Financial Bank



Samina Sohail
Westside Adult &
Pediatric Care



Lonnie Tucker
Lakota Community
Council



David Yeager
Jaco Waterproofing



Butler County United Way



Independent Auditor's Report

To the Board of Trustees
Butler County United Way
Hamilton, Ohio

Report on the Financial Statements

We have audited the accompanying financial statements of Butler County United Way (the Organization), which comprise the statement of financial position as of June 30, 2016, and the related statements of activities, functional expenses and cash flows for the year then ended, and the related notes to the financial statements.

Management's Responsibility for the Financial Statements

Management is responsible for the preparation and fair presentation of these financial statements in accordance with accounting principles generally accepted in the United States of America; this includes the design, implementation, and maintenance of internal control relevant to the preparation and fair presentation of financial statements that are free from material misstatement, whether due to fraud or error.

Auditor's Responsibility

Our responsibility is to express an opinion on these financial statements based on our audit. We conducted our audit in accordance with auditing standards generally accepted in the United States of America. Those standards require that we plan and perform the audit to obtain reasonable assurance about whether the financial statements are free from material misstatement.

An audit involves performing procedures to obtain audit evidence about the amounts and disclosures in the financial statements. The procedures selected depend on the auditor's judgment, including the assessment of the risks of material misstatement of the financial statements, whether due to fraud or error. In making those risk assessments, the auditor considers internal control relevant to the entity's preparation and fair presentation of the financial statements in order to design audit procedures that are appropriate in the circumstances, but not for the purpose of expressing an opinion on the effectiveness of the entity's internal control. Accordingly, we express no such opinion. An audit also includes evaluating the appropriateness of accounting policies used and the reasonableness of significant accounting estimates made by management, as well as evaluating the overall presentation of the financial statements.

We believe that the audit evidence we have obtained is sufficient and appropriate to provide a basis for our audit opinion.

Kentucky
Indiana
Ohio

Mountjoy Chilton Medley LLP

P 513.579.1717 | F 513.579.1729

201 East Fifth Street | Suite 2100 | Cincinnati, OH 45202

www.mcmcpa.com | 888.587.1719

A Member of PrimeGlobal – An Association of Independent Accounting Firms

Opinion

In our opinion, the financial statements referred to above present fairly, in all material respects, the financial position of Butler County United Way as of June 30, 2016, and the changes in its net assets and its cash flows for the year then ended, in accordance with accounting principles generally accepted in the United States of America.

Restatement of Opening Net Assets

As noted in Note 17 to the financial statements, unrestricted net assets as of June 30, 2015 have been restated based on corrections of balances related to accounts payable not recorded during the year ended June 30, 2015. Our opinion is not modified with respect to these matters.



Cincinnati, Ohio
November 2, 2016

Butler County UnitedWay
Statement of Financial Position
As of June 30, 2016

Assets

Current assets

Cash and cash equivalents	\$	43,474
Pledges receivable, net		909,694
Investments, at fair value		430,785
Total current assets		<u>1,383,953</u>

Property and equipment, net

33,891

Noncurrent assets

Beneficial interest in assets held by others		82,765
Board designated cash		204,603
Total noncurrent assets		<u>287,368</u>
Total assets	\$	<u><u>1,705,212</u></u>

Liabilities and Net Assets

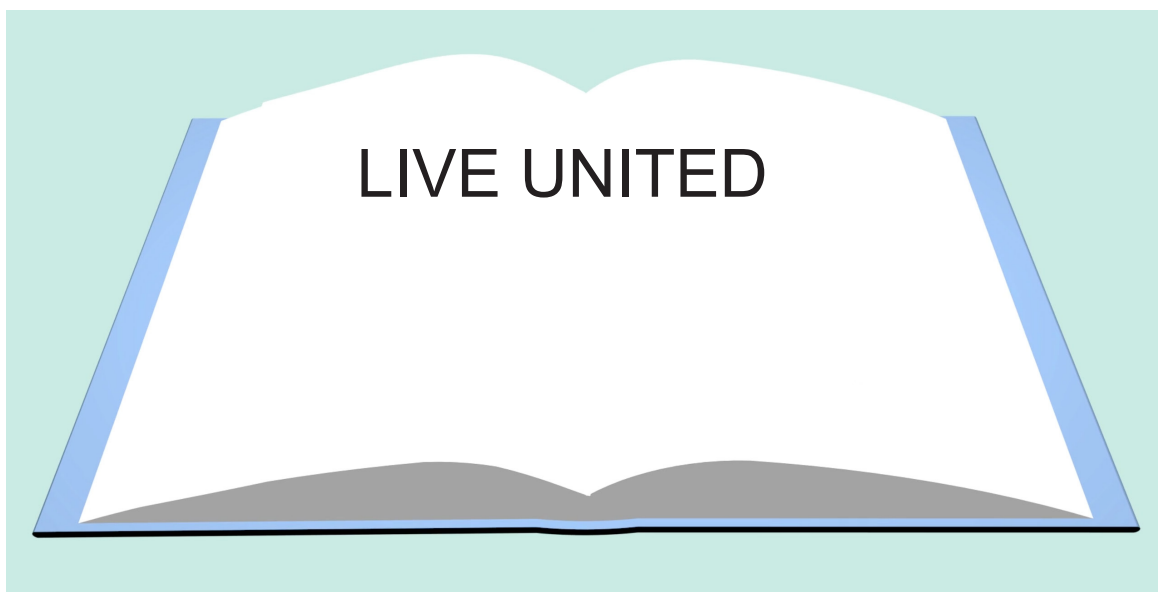
Current liabilities

Accounts payable	\$	15,992
Allocations and designations payable		878,500
Designations payable to other United Way organizations		45,836
Total current liabilities		<u>940,328</u>

Net assets

Board designated		204,603
Unrestricted		510,281
Total unrestricted		<u>714,884</u>
Temporarily restricted		50,000
Total net assets		<u>764,884</u>
Total liabilities and net assets	\$	<u><u>1,705,212</u></u>

Butler County United Way
323 North Third Street
Hamilton, Ohio 45011
bc-unitedway.org



Connect with us!



Butler County United Way



@BCUW



Butler County United Way